



Price
£450,000

Freehold

3x  2x  1x 

**Meades Close, Marden,
Tonbridge, Kent, TN12**

OVER 60?

Secure this property
for up to **59% less!**

Wards
Helping you move forwards



Main features

- **Perfectly located in a quiet cul-de-sac in central Marden near local amenities and mainline station**
- **Well presented and decorated throughout**
- **Good quality appliances within the kitchen and shower room**
- **Garage and Driveway**
- **Good sized garden connected to fields with views afar**

Accommodation

GROUND FLOOR

Porch

Lounge: 14'6 x 14'6 (4.42m x 4.42m)

Dining Area: 11'9 x 8'2 (3.58m x 2.49m)

Kitchen: 11'10 x 5'10 (3.61m x 1.78m)

FIRST FLOOR

Landing

Bedroom 1: 13'2 x 8'1 (4.02m x 2.47m)

Bedroom 2: 11'7 x 8'1 (3.53m x 2.47m)

Bedroom 3: 9'10 x 6'10 (3.00m x 2.08m)

Shower Room: 6'3 x 6'2 (1.91m x 1.88m)

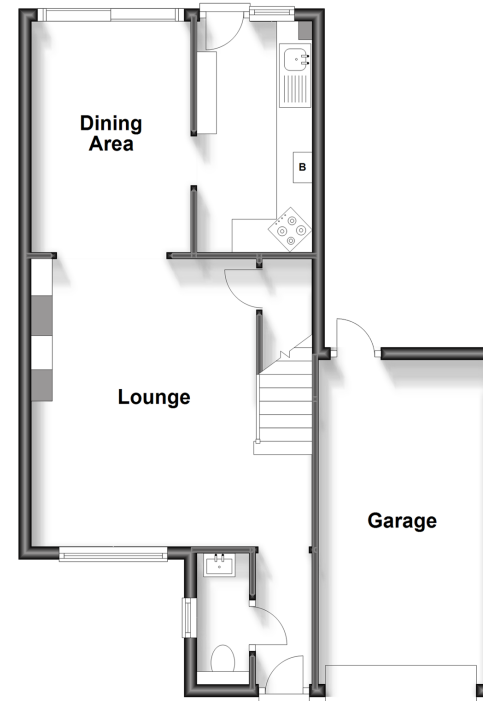
OUTSIDE

Garage and Driveway

Front and Rear Garden

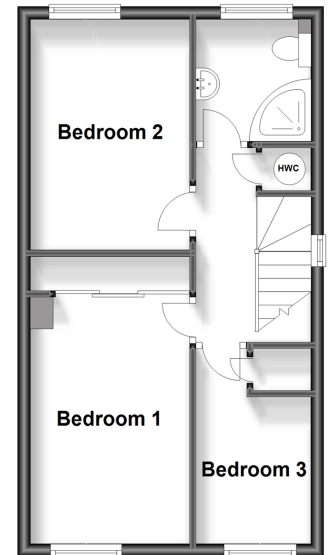
Ground Floor

Approx. 54.6 sq. metres (588.2 sq. feet)



First Floor

Approx. 36.8 sq. metres (396.1 sq. feet)



Call Staplehurst - 01580 893322 ■ wardsofkent.co.uk

- Legal advice should be taken to verify fixtures/fittings, planning, alterations and/or lease details
- Through a Homewise Home For Life Plan people aged 60+ can secure this property for up to 59% less, by purchasing a Lifetime Lease.

- Appliances & services are untested, dimensions are approximate and floor plans are not to scale



13922470/20240226/JG1/KA