



Price
£750,000

Freehold

4x  3x  2x 

**Bramling Gardens,
Sissinghurst, Cranbrook,
Kent, TN17**

OVER 60?

Secure this property
for up to **59% less!**

Wards
Helping you move forwards



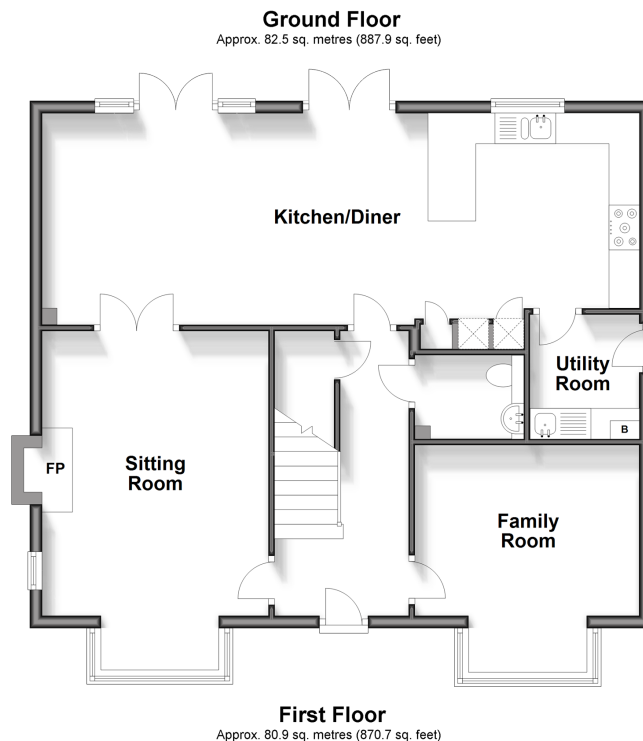
Main features

- Double bay fronted family house situated in a sought after development of Sissinghurst
- Beautifully presented throughout with plenty of space for all the family to relax or entertain
- All bedrooms are doubles with two en-suites, Bedroom 1 having his and hers basins
- Large driveway and Double garage
- Offered Chain Free

Call Staplehurst - 01580 893322 ■ wardsofkent.co.uk

- Legal advice should be taken to verify fixtures/fittings, planning, alterations and/or lease details
- Through a Homewise Home For Life Plan people aged 60+ can secure this property for up to 59% less, by purchasing a Lifetime Lease.

- Appliances & services are untested, dimensions are approximate and floor plans are not to scale



Accommodation

GROUND FLOOR

Entrance Hall
 Kitchen/Diner: 32'1 x 12'8 (9.79m x 3.86m)
 Utility Room: 6'11 x 6'6 (2.11m x 1.98m)
 Family Room : 12'7 x 12'2 (3.84m x 3.71m)
 Sitting Room : 18'3 x 14'5 (5.57m x 4.40m)
 Cloakroom

FIRST FLOOR

Landing
 Bedroom 1: 12'8 x 10'1 (3.86m x 3.08m)
 En-suite Shower Room : 12'8 x 6'11 (3.86m x 2.11m)
 Bedroom 2: 12'7 x 11'8 (3.84m x 3.56m)
 En-Suite Shower Room
 Bedroom 3: 12'7 x 10'1 (3.84m x 3.08m)
 Bedroom 4: 12'8 x 9'5 (3.86m x 2.87m)
 Bathroom: 6'10 x 6'7 (2.08m x 2.01m)

OUTSIDE

Front and Rear Garden
 Detached Double Garage