



Guide Price

£600,000

Freehold

4x  2x  2x 

**Ramsden Way, Marden,
Tonbridge, Kent, TN12**

OVER 60?

Secure this property
for up to **59% less!**

Wards
Helping you move forwards



Main features

- Well presented house within The Jones Development
- Located on a corner plot with large driveway and electric points in rear garden,
- Open plan kitchen diner, separate lounge and conservatory
- Converted garage to studio
- Convenient utility room, downstairs cloakroom and main bedroom with en-suite

Accommodation

GROUND FLOOR

Entrance Hall
 Kitchen/Diner: 24'0 x 10'10 (7.32m x 3.30m)
 Utility: 8'0 x 6'1 (2.44m x 1.86m)
 Lounge: 16'2 x 10'9 (4.93m x 3.28m)
 Study: 10'3 x 8'7 (3.13m x 2.62m)
 Conservatory: 13'6 x 9'1 (4.12m x 2.77m)
 Cloakroom: 5'4 x 3'7 (1.63m x 1.09m)

FIRST FLOOR

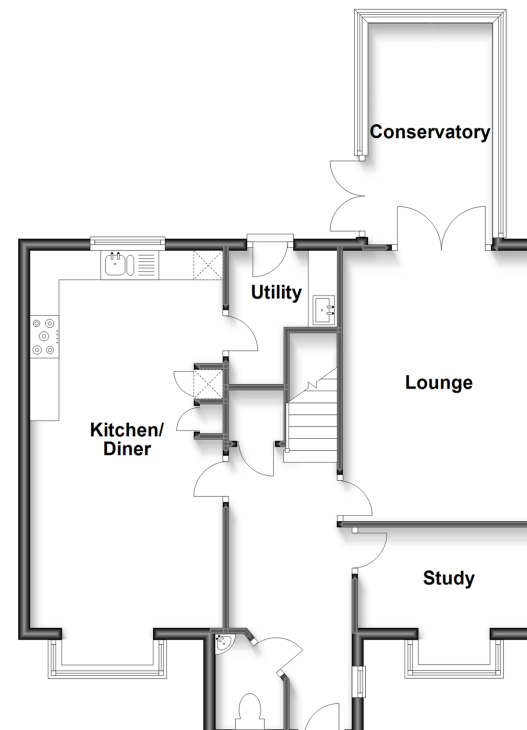
Landing
 Bedroom 1: 13'0 x 10'6 (3.97m x 3.20m)
 En-Suite Shower Room: 5'11 x 5'11 (1.80m x 1.80m)
 Bedroom 2: 11'2 x 9'2 (3.41m x 2.80m)
 Bedroom 3: 10'9 x 8'1 (3.28m x 2.47m)
 Bedroom 4: 11'2 x 6'5 (3.41m x 1.96m)
 Bathroom: 11'1 x 5'6 (3.38m x 1.68m)

OUTSIDE

Driveway
 Converted garage office/studio
 Rear Garden with patio

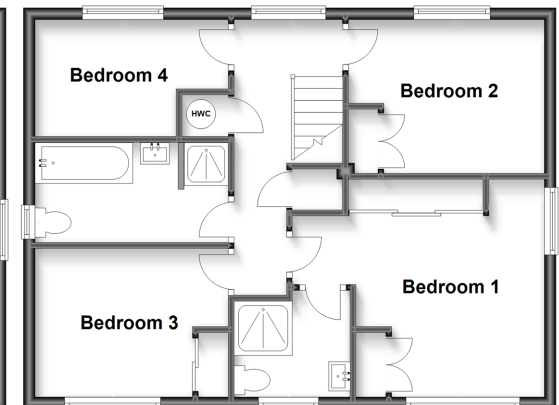
Ground Floor

Approx. 70.0 sq. metres (753.2 sq. feet)



First Floor

Approx. 56.6 sq. metres (609.4 sq. feet)



Call Staplehurst - 01580 893322 ■ wardsofkent.co.uk

- Legal advice should be taken to verify fixtures/fittings, planning, alterations and/or lease details
- Through a Homewise Home For Life Plan people aged 60+ can secure this property for up to 59% less, by purchasing a Lifetime Lease.

- Appliances & services are untested, dimensions are approximate and floor plans are not to scale



13922768/20231220/JG1/MF