

OVER 60?

Secure this property
for up to **59% less!**



Video Tour available

Price

£995,000

Freehold

5x 2x 1x

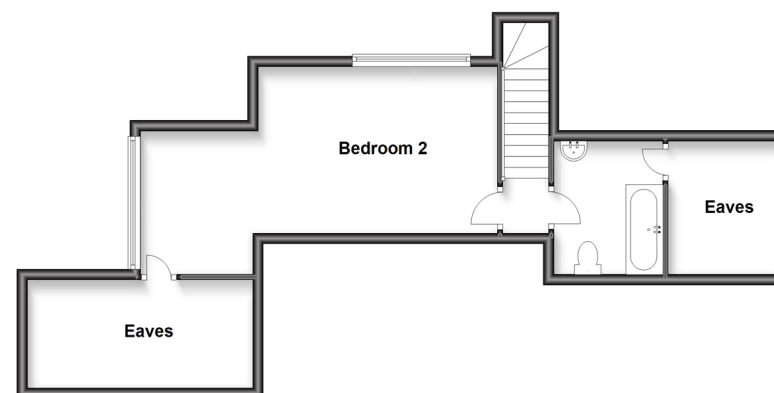
Green Lane, Marden, Tonbridge, Kent,
TN12

Wards
Helping you move forwards

Ground Floor
Approx. 154.3 sq. metres (1660.6 sq. feet)



First Floor
Approx. 43.2 sq. metres (465.5 sq. feet)



Annexe
Approx. 84.2 sq. metres (906.1 sq. feet)



Accommodation

GROUND FLOOR

Entrance Hall

Kitchen: 14'5 x 13'11 (4.40m x 4.24m)

Utility : 9'9 x 6'8 (2.97m x 2.03m)

Bedroom 6/Office: 9'8 x 7'4 (2.95m x 2.24m)

Lounge: 17'1 x 14'0 (5.21m x 4.27m)

Bedroom 4: 11'2 x 8'3 (3.41m x 2.52m)

Bedroom 1: 12'11 x 12'0 (3.94m x 3.66m)

En-suite Wet Room: 8'5 x 4'9 (2.57m x 1.45m)

Bathroom: 10'7 x 7'4 (3.23m x 2.24m)

Bedroom 5: 10'8 x 9'3 (3.25m x 2.82m)

Bedroom 3: 13'11 x 10'0 (4.24m x 3.05m)

Cloakroom: 4'11 x 2'11 (1.50m x 0.89m)

FIRST FLOOR

Bedroom 2: 22'1 x 10'2 (6.74m x 3.10m)

Bathroom 2: 8'0 x 6'9 (2.44m x 2.06m)

ANNEXE

Annexe Kitchen/Living Area: 28'5 x 18'9 (8.67m x 5.72m)

Annexe Bedroom 1: 16'2 x 8'7 (4.93m x 2.62m)

Annexe Bedroom 2 : 16'2 x 8'9 (4.93m x 2.67m)

Annexe Bathroom : 10'2 x 6'11 (3.10m x 2.11m)

Annexe Utility Room

OUTSIDE

Large Driveway

Garden and adjacent field

Workshop



Main features

- Spacious bungalow with electric gated driveway with ample parking, track leading to workshops and field
- Solid oak flooring and solid pine doors and skirting
- Large double bedrooms throughout
- Main bedroom with en-suite wet room
- Garden with two bedroom annexe and field



Nearest Schools

Primary Schools: St Margaret's, Collier Street C of E Voluntary Controlled School 0.6 miles, Marden Primary 1.2 miles, Hunton C of E Primary 2.1 miles

Secondary Schools: Bethany School 3.5 miles, Mascalls



Transport Information

Train Stations: Marden 1.7 miles, Beltring 3.1 miles, Paddock Wood 3.3 miles



Address

Green Lane, Marden, Tonbridge, Kent, TN12



Directions

For directions to this property please contact us.



Call Staplehurst Branch 01580 893322 ■ wardsofkent.co.uk



- Legal advice should be taken to verify fixtures/fittings, planning, alterations and/or lease details
- Appliances & services are untested, dimensions are approximate and floor plans are not to scale
- Through a Homewise Home For Life Plan people aged 60+ can secure this property for up to 59% less, by purchasing a Lifetime Lease.



13922805/20230826/JG1/CG