



Price
£360,000

Freehold

2x  2x  1x 

**Blossom Way, Marden,
Tonbridge, Kent, TN12**

OVER 60?

Secure this property
for up to **59% less!**

Wards
Helping you move forwards



Main features

- Immaculately kept terraced house set in popular village of Marden with all its amenities and countryside walks
- High gloss white kitchen, engineered oak flooring throughout living space
- Two En-suites as well as downstairs cloakroom
- Anthracite windows throughout
- Approximately 5 years NHBC remaining, Ideal first time buy or investment.

Accommodation

GROUND FLOOR

Entrance Hall
Kitchen: 10'2 x 7'11 (3.10m x 2.41m)
Lounge: 15'7 x 15'4 (4.75m x 4.68m)
Cloakroom

FIRST FLOOR

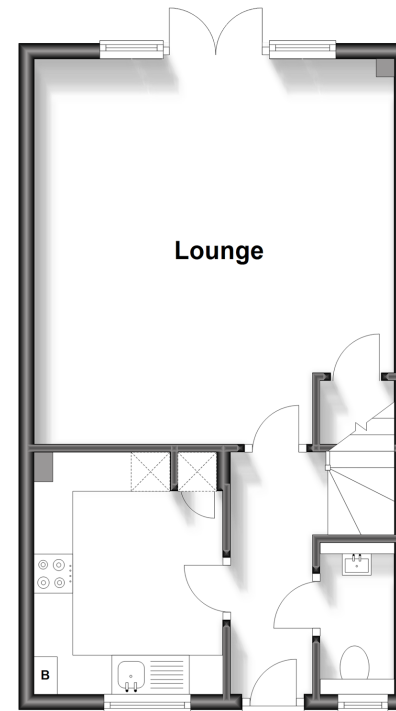
Landing
Bedroom 1: 13'2 x 8'10 (4.02m x 2.69m)
En-suite Bathroom
Bedroom 2: 11'2 x 8'5 (3.41m x 2.57m)
En-suite Shower Room

OUTSIDE

Car Port
Allocated Parking
Front and Rear Garden

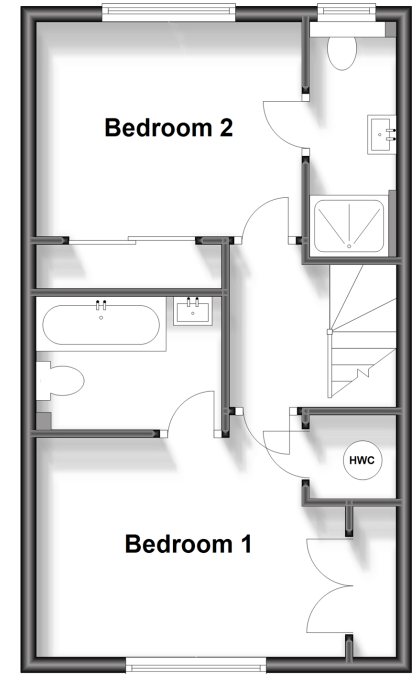
Ground Floor

Approx. 37.9 sq. metres (407.8 sq. feet)



First Floor

Approx. 37.9 sq. metres (407.8 sq. feet)



Call Staplehurst - 01580 893322 ■ wardsofkent.co.uk

- Legal advice should be taken to verify fixtures/fittings, planning, alterations and/or lease details
- Through a Homewise Home For Life Plan people aged 60+ can secure this property for up to 59% less, by purchasing a Lifetime Lease.

- Appliances & services are untested, dimensions are approximate and floor plans are not to scale



13922824/20230929/JG1/JW