



**Price**  
**£585,000**

**Freehold**

4x  2x  1x 

**Pilgrim Close, Marden,  
Tonbridge, Kent, TN12**

**OVER 60?**

Secure this property  
for up to **59% less!**



**Video Tour available**

**Wards**  
Helping you move forwards





## Main features

- Well presented detached house with approximately 8 years NHBC remaining
- Situated within popular Redrow development
- Main bedroom with bespoke wardrobes and en-suite shower room
- Large end plot with ample parking and car point
- Walking distance to mainline station and Marden Academy primary school

## Accommodation

### GROUND FLOOR

Entrance Hall  
Kitchen Diner: 15'4 x 13'10 (4.68m x 4.22m)  
Lounge: 17'4 x 11'2 (5.29m x 3.41m)  
Cloakroom: 5'7 x 3'6 (1.70m x 1.07m)

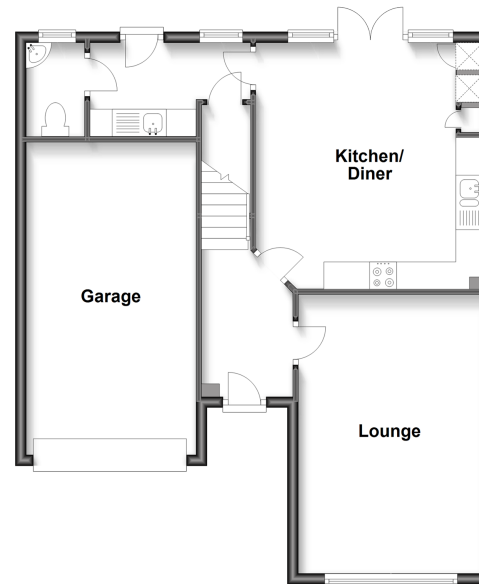
### FIRST FLOOR

Landing  
Bedroom 1 : 12'11 x 11'2 (3.94m x 3.41m)  
En-suite Shower Room: 6'10 x 5'0 (2.08m x 1.53m)  
Bedroom 2: 10'6 x 8'11 (3.20m x 2.72m)  
Bedroom 3: 10'2 x 8'6 (3.10m x 2.59m)  
Bedroom 4: 10'10 x 10'6 (3.30m x 3.20m)  
Bathroom: 7'5 x 6'6 (2.26m x 1.98m)

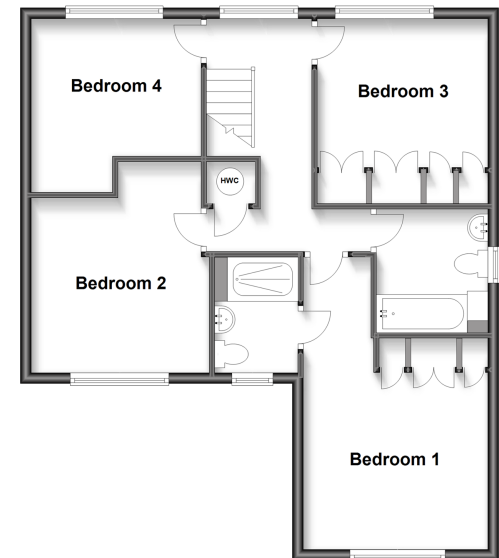
### OUTSIDE

Integral Garage  
Large Driveway  
Rear Garden

**Ground Floor**  
Approx. 69.1 sq. metres (744.3 sq. feet)



**First Floor**  
Approx. 65.8 sq. metres (708.2 sq. feet)



**Call Staplehurst - 01580 893322 ■ [wardsofkent.co.uk](http://wardsofkent.co.uk)**

■ Legal advice should be taken to verify fixtures/fittings, planning, alterations and/or lease details  
■ Through a Homewise Home For Life Plan people aged 60+ can secure this property for up to 59% less, by purchasing a Lifetime Lease.

■ Appliances & services are untested, dimensions are approximate and floor plans are not to scale