



Price
£375,000

Freehold

2x  2x  1x 

**Blossom Way, Marden,
Tonbridge, Kent, TN12**

OVER 60?

Secure this property
for up to **59% less!**

Wards
Helping you move forwards



Main features

- Beautifully presented with double bedrooms
- One en-suite bathroom and one en-suite shower room
- Open plan living and dining areas
- Situated within the sought after Millwood development
- Driveway and Garage

Accommodation

GROUND FLOOR

Entrance Hall
 Kitchen: 10'1 x 8'0 (3.08m x 2.44m)
 Lounge: 15'11 x 15'5 (4.85m x 4.70m)
 Cloakroom: 6'3 x 2'11 (1.91m x 0.89m)

FIRST FLOOR

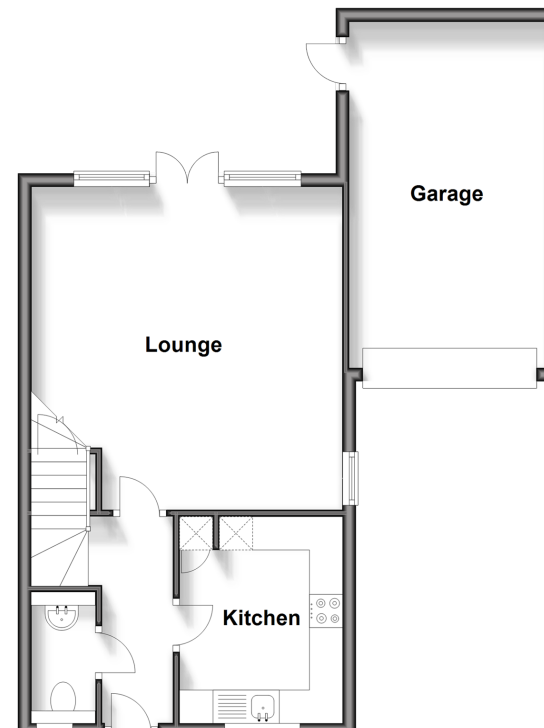
Landing
 Bedroom 1: 13'2 x 8'11 (4.02m x 2.72m)
 En-Suite Bathroom: 8'11 x 8'10 (2.72m x 2.69m)
 Bedroom 2: 11'6 x 8'11 (3.51m x 2.72m)
 En-suite Shower Room: 8'11 x 3'4 (2.72m x 1.02m)

OUTSIDE

Rear Garden with patio area
 Garage and Driveway

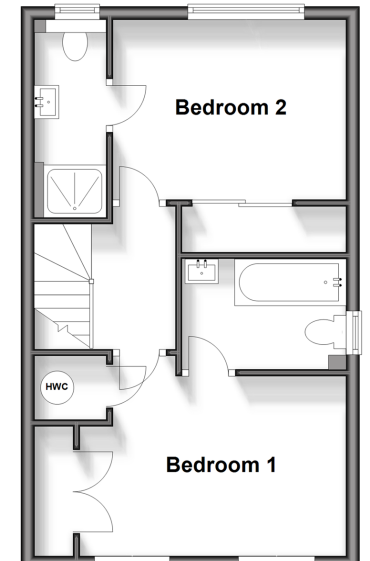
Ground Floor

Approx. 53.7 sq. metres (577.9 sq. feet)



First Floor

Approx. 37.8 sq. metres (407.0 sq. feet)



Call Staplehurst - 01580 893322 ■ wardsofkent.co.uk

- Legal advice should be taken to verify fixtures/fittings, planning, alterations and/or lease details
- Through a Homewise Home For Life Plan people aged 60+ can secure this property for up to 59% less, by purchasing a Lifetime Lease.

- Appliances & services are untested, dimensions are approximate and floor plans are not to scale



13922925/20240302/JG1/MF