



OVER 60?

Secure this property
for up to **59% less!**

Price

£390,000

Freehold

2x  2x  1x 

**Blossom Way, Marden,
Tonbridge, Kent, TN12**

Wards
Helping you move forwards



Main features

- Modern end of terrace house
- Approximately 5 years left on NHBC
- Two allocated parking spaces
- Fully fitted kitchen at the front of the property and downstairs cloakroom
- Good size living room with patio doors out to private garden

Accommodation

GROUND FLOOR

Entrance Hall

Kitchen: 10'2 x 8'0 (3.10m x 2.44m)

Lounge: 15'10 x 15'5 (4.83m x 4.70m)

Cloakroom

FIRST FLOOR

Landing

Bedroom 1: 13'2 x 8'10 (4.02m x 2.69m)

En-suite Bathroom

Bedroom 2: 11'6 x 8'11 (3.51m x 2.72m)

En-suite Shower Room

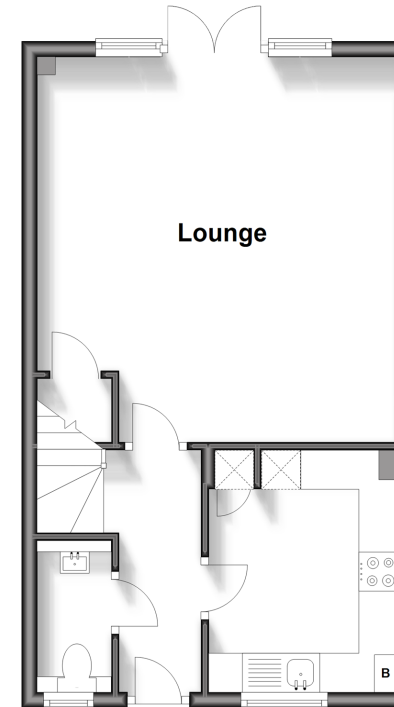
OUTSIDE

Front and Rear Garden

Car Port and Allocated Parking

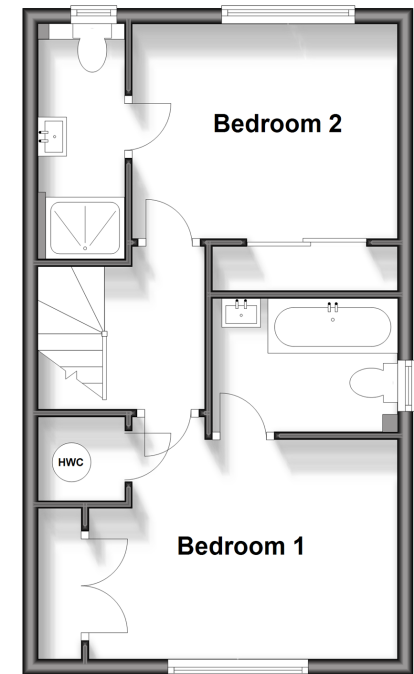
Ground Floor

Approx. 38.2 sq. metres (410.9 sq. feet)



First Floor

Approx. 38.1 sq. metres (410.6 sq. feet)



Call Staplehurst - 01580 893322 ■ wardsofkent.co.uk

- Legal advice should be taken to verify fixtures/fittings, planning, alterations and/or lease details
- Appliances & services are untested, dimensions are approximate and floor plans are not to scale
- Through a Homewise Home For Life Plan people aged 60+ can secure this property for up to 59% less, by purchasing a Lifetime Lease.



13922966/20240316/MF/MF