



Price
£375,000

Freehold

3x  2x  1x 

**Forge Cottages, High
Street, Marden, Kent,
TN12**

Wards
Helping you move forwards



Main features

- Charming cottage in the heart of Marden
- Private Garden with lawn and patio area
- Off Road Parking for two cars
- Main bedroom benefits from an ensuite shower room
- No forward Chain

Accommodation

GROUND FLOOR

Entrance Hall

Cloakroom: 5'11 x 2'10 (1.80m x 0.86m)

Lounge: 17'1 x 11'5 (5.21m x 3.48m)

Dining Area: 12'0 x 8'3 (3.66m x 2.52m)

Kitchen: 12'0 x 6'6 (3.66m x 1.98m)

FIRST FLOOR

Landing

Bedroom 1: 11'10 x 10'7 (3.61m x 3.23m)

En-suite Shower Room: 6'1 x 4'2 (1.86m x 1.27m)

Bedroom 2: 12'1 x 8'0 (3.69m x 2.44m)

Bedroom 3: 9'0 x 6'10 (2.75m x 2.08m)

Bathroom: 7'11 x 4'10 (2.41m x 1.47m)

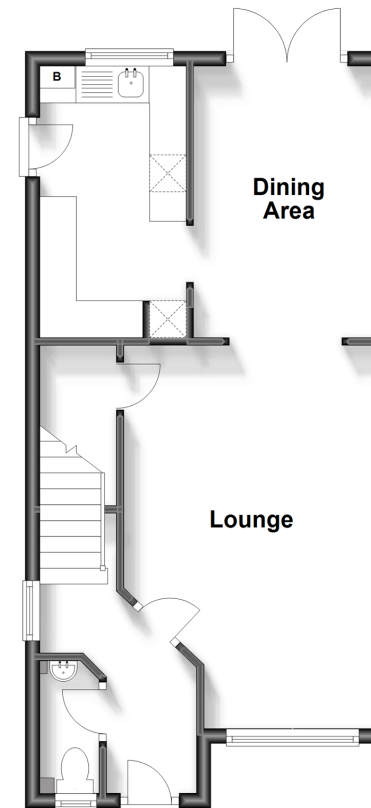
OUTSIDE

Private garden with patio area

Parking for two cars

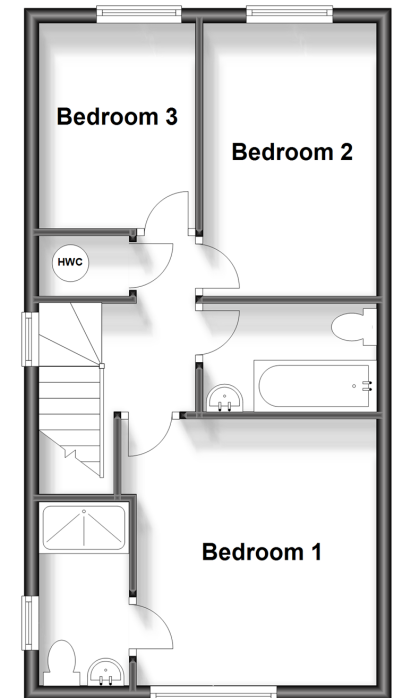
Ground Floor

Approx. 43.4 sq. metres (466.7 sq. feet)



First Floor

Approx. 41.5 sq. metres (446.6 sq. feet)



Call Staplehurst - 01580 893322 ■ wardsof Kent.co.uk

- Legal advice should be taken to verify fixtures/fittings, planning, alterations and/or lease details
- Appliances & services are untested, dimensions are approximate and floor plans are not to scale



13923006/20240127/JG1/JW