



**Price**  
**£475,000**

**Freehold**

3x  1x  2x 

**Green Lane, Marden,  
Tonbridge, Kent, TN12**

**OVER 60?**

Secure this property  
for up to **59% less!**

*Wards*  
Helping you move forwards





## Main features

- Beautifully presented with neutral decor
- Large kitchen breakfast room
- Stunning large garden backing onto fields
- Spacious throughout with room to entertain
- End of Chain

## Accommodation

### GROUND FLOOR

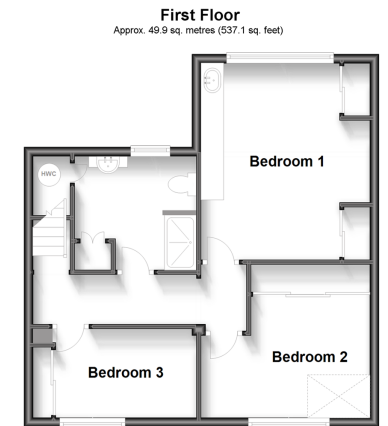
Entrance Porch  
 Kitchen: 18'9 x 11'9 (5.72m x 3.58m)  
 Dining Area: 12'6 x 11'6 (3.81m x 3.51m)  
 Lounge: 26'3 x 12'4 (8.01m x 3.76m)  
 Conservatory: 14'8 x 12'9 (4.47m x 3.89m)

### FIRST FLOOR

Landing  
 Bedroom 1: 14'2 x 12'2 (4.32m x 3.71m)  
 Bedroom 2: 12'3 x 11'7 (3.74m x 3.53m)  
 Bedroom 3: 11'9 x 7'4 (3.58m x 2.24m)  
 Shower Room

### OUTSIDE

Garage and Driveway  
 Large Rear Garden with patio



**Call Staplehurst - 01580 893322 ■ [wardsofkent.co.uk](http://wardsofkent.co.uk)**

■ Legal advice should be taken to verify fixtures/fittings, planning, alterations and/or lease details  
 ■ Through a Homewise Home For Life Plan people aged 60+ can secure this property for up to 59% less, by purchasing a Lifetime Lease.

■ Appliances & services are untested, dimensions are approximate and floor plans are not to scale