



**Price**  
**£650,000**

**Freehold**

4x  2x  1x 

**Campion Way, Marden,  
Tonbridge, Kent, TN12**

*Wards*  
Helping you move forwards





## Main features

- Approximately 5 years left on NHBC
- En-suite to Bedroom 1 with built in wardrobes
- Garage with solar panels
- Sought after location in the popular Millwood development, opposite park, ideal for families
- Modern fitted kitchen with large dining area

## Accommodation

### GROUND FLOOR

Entrance Hall

Kitchen/Breakfast Room: 15'9 x 9'9 (4.80m x 2.97m)

Utility Room

Dining Room: 12'4 x 12'3 (3.76m x 3.74m)

Lounge: 20'1 x 11'9 (6.13m x 3.58m)

Cloakroom

### FIRST FLOOR

Landing

Bedroom 1: 12'4 x 11'4 (3.76m x 3.46m)

En-Suite Shower Room

Bedroom 2: 11'9 x 11'4 (3.58m x 3.46m)

Bedroom 3: 10'9 x 8'10 (3.28m x 2.69m)

Bedroom 4: 8'4 x 8'3 (2.54m x 2.52m)

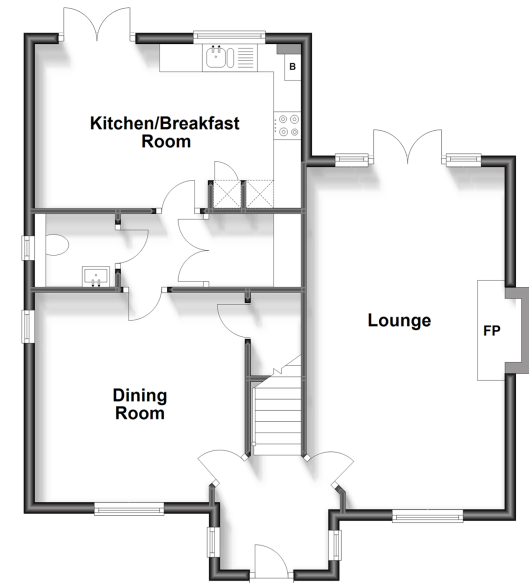
Bathroom

### OUTSIDE

Front and Rear Garden

Garage and Driveway

**Ground Floor**  
Approx. 65.0 sq. metres (699.2 sq. feet)



**First Floor**  
Approx. 63.3 sq. metres (681.0 sq. feet)



**Call Staplehurst - 01580 893322 ■ [wardsof Kent.co.uk](http://wardsof Kent.co.uk)**

- Legal advice should be taken to verify fixtures/fittings, planning, alterations and/or lease details
- Appliances & services are untested, dimensions are approximate and floor plans are not to scale



13923049/20231104/JG1/KA