



Price
£600,000

Freehold

5x  3x  2x 

**Barnes Walk, Marden,
Tonbridge, Kent, TN12**

OVER 60?

Secure this property
for up to **59% less!**

Wards
Helping you move forwards



Main features

- Beautifully presented set over 3 floors
- Situated in a quiet cul-de-sac of Marden, walking distance to village and station
- Views of the village green with direct access from the rear
- Due to the size of the generous sized garden, extension potential (Subject to Planning Permission)
- Off Road parking, 2 en-suites, 1 family bathroom and downstairs cloakroom
- End of Chain considered

Accommodation

GROUND FLOOR

Entrance Hall
 Kitchen/Diner: 14'5 x 10'2 (4.40m x 3.10m)
 Dining Area: 8'6 x 8'6 (2.59m x 2.59m)
 Family Room: 15'5 x 8'6 (4.70m x 2.59m)
 Lounge: 15'9 x 11'2 (4.80m x 3.41m)
 Cloakroom

FIRST FLOOR

Landing
 Bedroom 2: 11'10 x 9'2 (3.61m x 2.80m)
 En-Suite Shower Room
 Bedroom 3: 10'6 x 8'6 (3.20m x 2.59m)
 Bedroom 4: 11'6 x 8'6 (3.51m x 2.59m)
 Bedroom 5/Study: 5'11 x 5'11 (1.80m x 1.80m)
 Bathroom : 6'3 x 5'11 (1.91m x 1.80m)

SECOND FLOOR

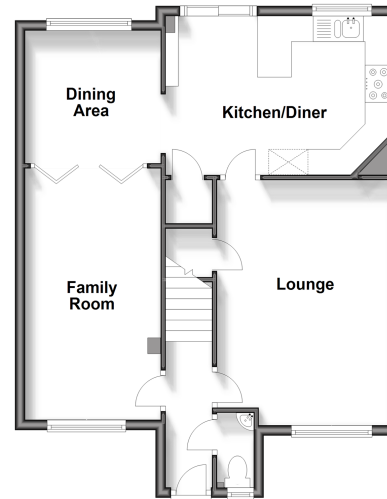
Bedroom 1: 19'8 x 9'6 (6.00m x 2.90m)
 En-suite Shower Room: 5'11 x 5'11 (1.80m x 1.80m)

OUTSIDE

Driveway
 Rear Garden with patio area

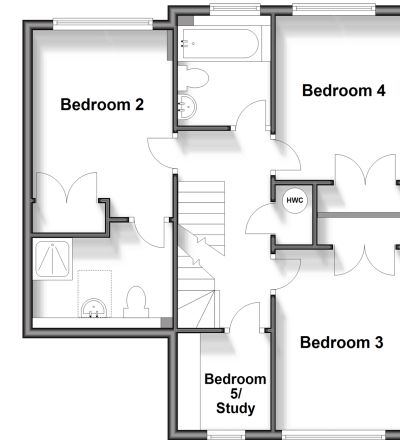
Ground Floor

Approx. 58.9 sq. metres (634.1 sq. feet)



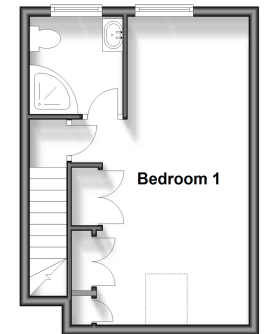
First Floor

Approx. 54.1 sq. metres (582.0 sq. feet)



Second Floor

Approx. 26.0 sq. metres (279.6 sq. feet)



Call Staplehurst - 01580 893322 ■ wardsofkent.co.uk

- Legal advice should be taken to verify fixtures/fittings, planning, alterations and/or lease details
- Through a Homewise Home For Life Plan people aged 60+ can secure this property for up to 59% less, by purchasing a Lifetime Lease.

- Appliances & services are untested, dimensions are approximate and floor plans are not to scale



13923080/20240417/JG1/KA