



Price

£200,000

Leasehold

1x  1x  1x 

**Cascade Close, Marden,
Tonbridge, Kent, TN12**

OVER 60?

Secure this property
for up to **59% less!**

Wards
Helping you move forwards



Main features

- **Modern Ground Floor Apartment**
- **Open plan kitchen dining space**
- **Comes with allocated parking space, guest parking bays and plenty of on street parking**
- **Approximately 4 years left on NHBC new build warranty**
- **Popular location, short walk from local amenities and 10 minute walk to mainline station with regular trains direct to London**

Accommodation

GROUND FLOOR

Entrance Hall

Lounge: 18'1 x 13'9 (5.52m x 4.19m)

Bedroom : 14'5 x 10'10 (4.40m x 3.30m)

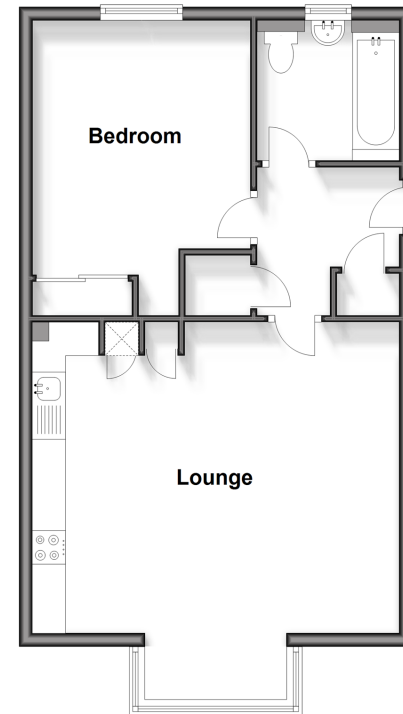
Bathroom

OUTSIDE

Allocated Parking Space

Ground Floor

Approx. 51.4 sq. metres (553.6 sq. feet)



Call Staplehurst - 01580 893322 ■ wardsofkent.co.uk

■ Legal advice should be taken to verify fixtures/fittings, planning, alterations and/or lease details
 ■ Through a Homewise Home For Life Plan people aged 60+ can secure this property for up to 59% less, by purchasing a Lifetime Lease.

■ Appliances & services are untested, dimensions are approximate and floor plans are not to scale