



Price
£275,000

Leasehold

2x  1x  1x 

**Bramley Court, Marden,
Tonbridge, Kent, TN12**

OVER 60?

Secure this property
for up to **59% less!**

Wards
Helping you move forwards



Main features

- Stunning views to the rear
- Located in the popular over 60's development
- Situated within the heart of Marden village
- No forward chain so ready to move into
- Wonderful and peaceful development

Accommodation

GROUND FLOOR

Entrance Hall

Kitchen: 11'2 x 10'10 (3.41m x 3.30m)

Lounge/Diner: 21'10 x 11'2 (6.66m x 3.41m)

Bedroom 1: 13'8 x 12'3 (4.17m x 3.74m)

Bedroom 2: 9'9 x 8'8 (2.97m x 2.64m)

Shower Room: 8'9 x 5'6 (2.67m x 1.68m)

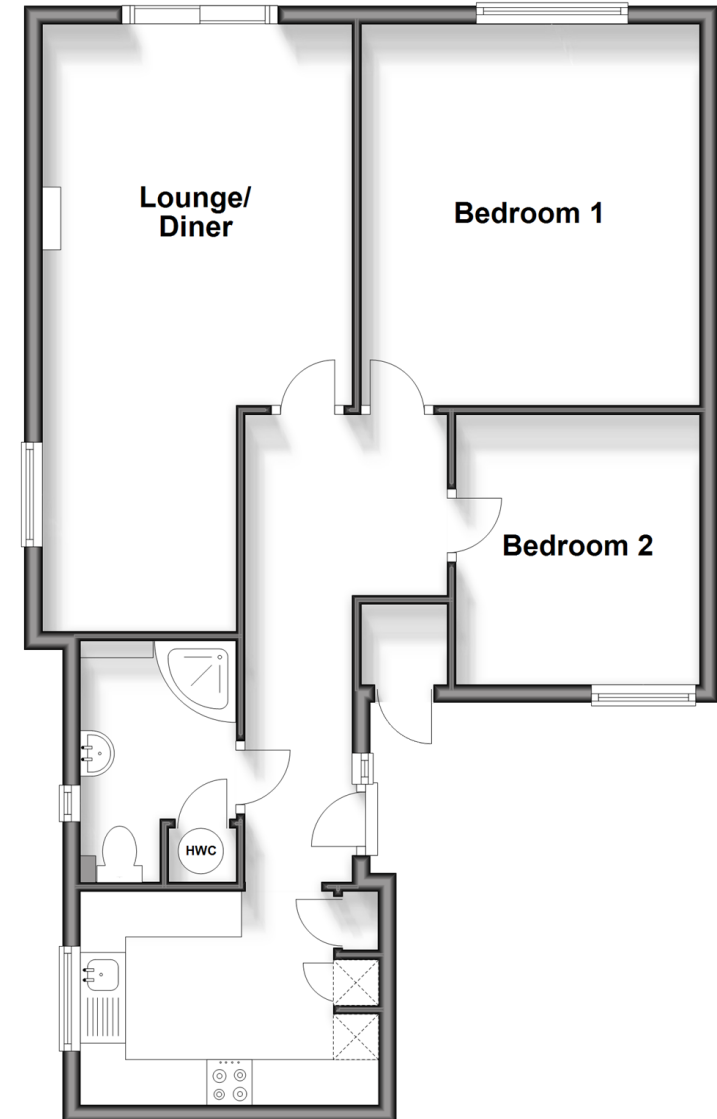
OUTSIDE

Rear Garden with Patio Area

Communal Areas - Inside & Out

Ground Floor

Approx. 67.3 sq. metres (724.5 sq. feet)



Call Staplehurst - 01580 893322 ■ wardsofkent.co.uk

- Legal advice should be taken to verify fixtures/fittings, planning, alterations and/or lease details
- Appliances & services are untested, dimensions are approximate and floor plans are not to scale
- Through a Homewise Home For Life Plan people aged 60+ can secure this property for up to 59% less, by purchasing a Lifetime Lease.



13923136/20240517/JG1/KA