



**OVER 60?**

Secure this property  
for up to **59% less!**

**Price**

**£400,000**

**Freehold**

2x  1x  1x 

**Tilden Close, Ashford,  
Kent, TN26**

*Wards*  
Helping you move forwards





## Main features

- **2 bedroom bungalow on a large plot**
- **Outline Planning Permission to build a large 3 bedroom, 3 bathroom chalet bungalow (20/00672/AS)**
- **Garage and off road parking**
- **Fantastic opportunity to build your dream home**
- **Great village location near Ashford and Tenterden**

## Accommodation

### GROUND FLOOR

Hallway

Kitchen: 15'10 x 10'8 (4.83m x 3.25m)

Bedroom 1: 12'5 x 9'4 (3.79m x 2.85m)

Bedroom 2: 10'5 x 9'10 (3.18m x 3.00m)

Bathroom: 8'0 x 5'8 (2.44m x 1.73m)

Lounge: 14'2 x 9'4 (4.32m x 2.85m)

### OUTSIDE

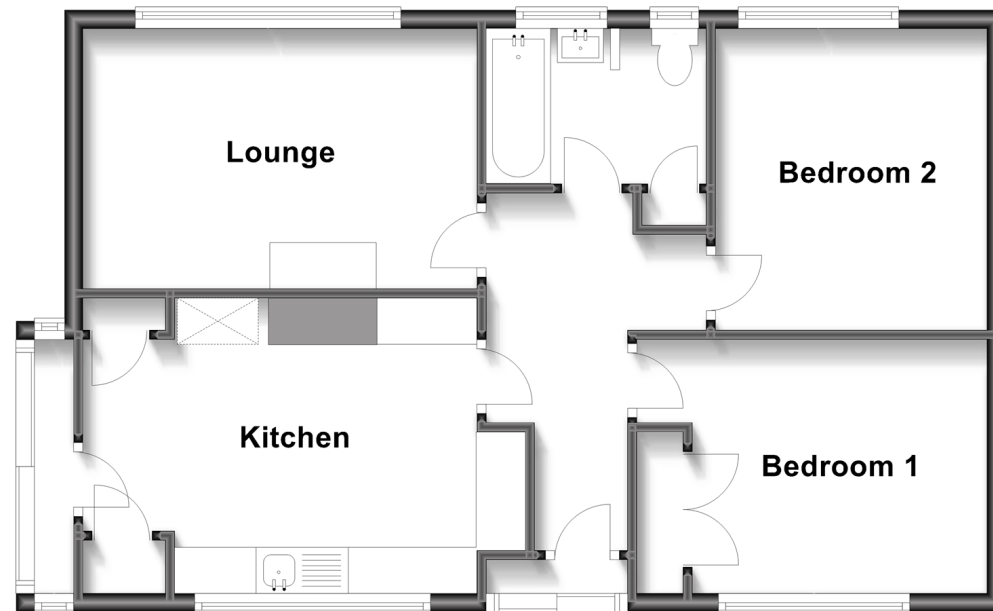
Garage

Driveway

Large Garden

### Ground Floor

Approx. 61.5 sq. metres (661.7 sq. feet)



**Call Tenterden - 01580 766002 ■ [wardsofkent.co.uk](http://wardsofkent.co.uk)**

- If buying to let, the energy rating will need to be improved to at least 'E' rating before you can let the property
- Appliances & services are untested, dimensions are approximate and floor plans are not to scale

- Legal advice should be taken to verify fixtures/fittings, planning, alterations and/or lease details
- Through a Homewise Home For Life Plan people aged 60+ can secure this property for up to 59% less, by purchasing a Lifetime Lease.