



**OVER 60?**

Secure this property  
for up to **59% less!**

**Price**

**£600,000**

**Freehold**

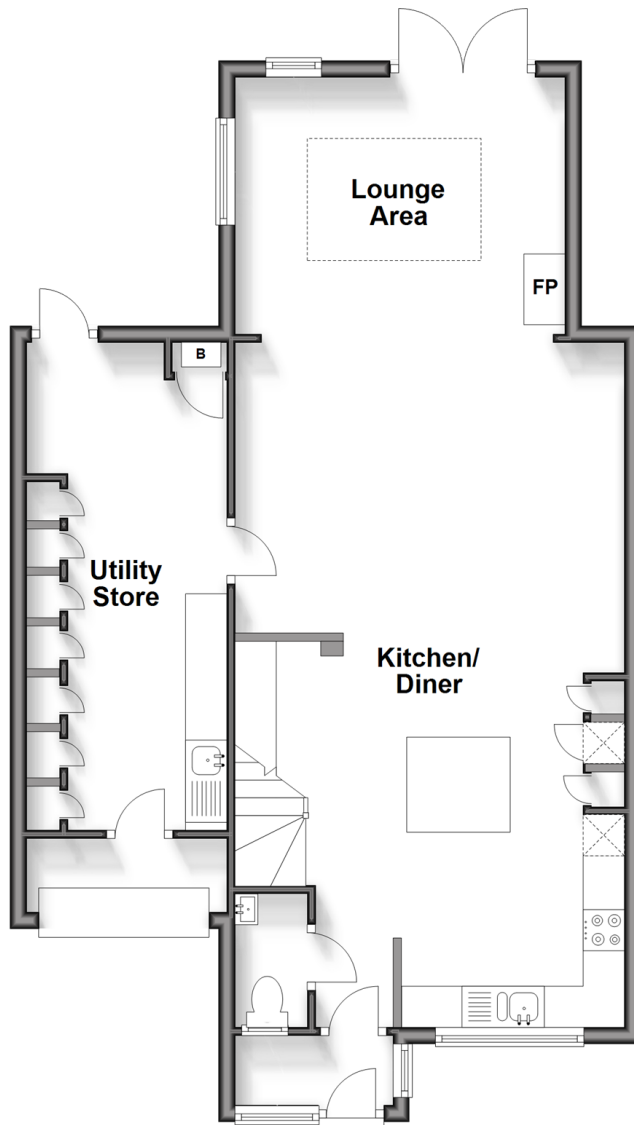
4x  2x  1x 

**Rogersmead, Tenterden,  
Kent, TN30**

*Wards*  
Helping you move forwards

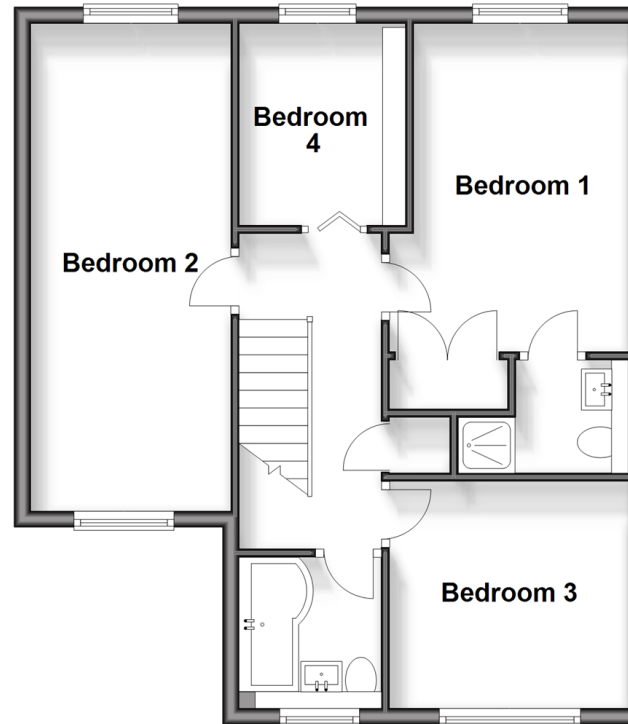
## Ground Floor

Approx. 71.6 sq. metres (770.4 sq. feet)



## First Floor

Approx. 54.3 sq. metres (584.6 sq. feet)



## Accommodation

### GROUND FLOOR

Porch

Hallway

Kitchen/Diner: 27'6 x 15'11 (8.39m x 4.85m)

Cloakroom

Lounge Area: 13'6 x 11'2 (4.12m x 3.41m)

Utility Store: 19'5 x 8'2 (5.92m x 2.49m)

Front Store Area

### FIRST FLOOR

Landing

Bedroom 1: 13'4 x 9'5 (4.07m x 2.87m)

En-Suite Shower Room: 6'10 x 4'7 (2.08m x 1.40m)

Bedroom 2: 20'1 x 8'5 (6.13m x 2.57m)

Bedroom 3: 9'9 x 9'9 (2.97m x 2.97m)

Bedroom 4: 8'6 x 6'9 (2.59m x 2.06m)

Bathroom: 5'11 x 5'5 (1.80m x 1.65m)

### OUTSIDE

Front and Rear Gardens

Driveway





## Main features

- Beautifully presented 4 bedroom detached house
- Stunning open plan layout
- Rear extension creating additional reception space illuminated with light
- En-suite shower room
- Converted garage creating a large store/utility room



### Nearest Schools

Primary Schools: Tenterden C of E Junior School 0.8 miles, St Michael's C of E Primary (Tenterden) 1.9 miles, Rolvenden Primary 3.4 miles

Secondary Schools: Homewood School and Sixth Form



### Transport Information

Train Stations: Headcorn 7.1 miles, Ham Street 7.3 miles, Appledore 7.9 miles



### Address

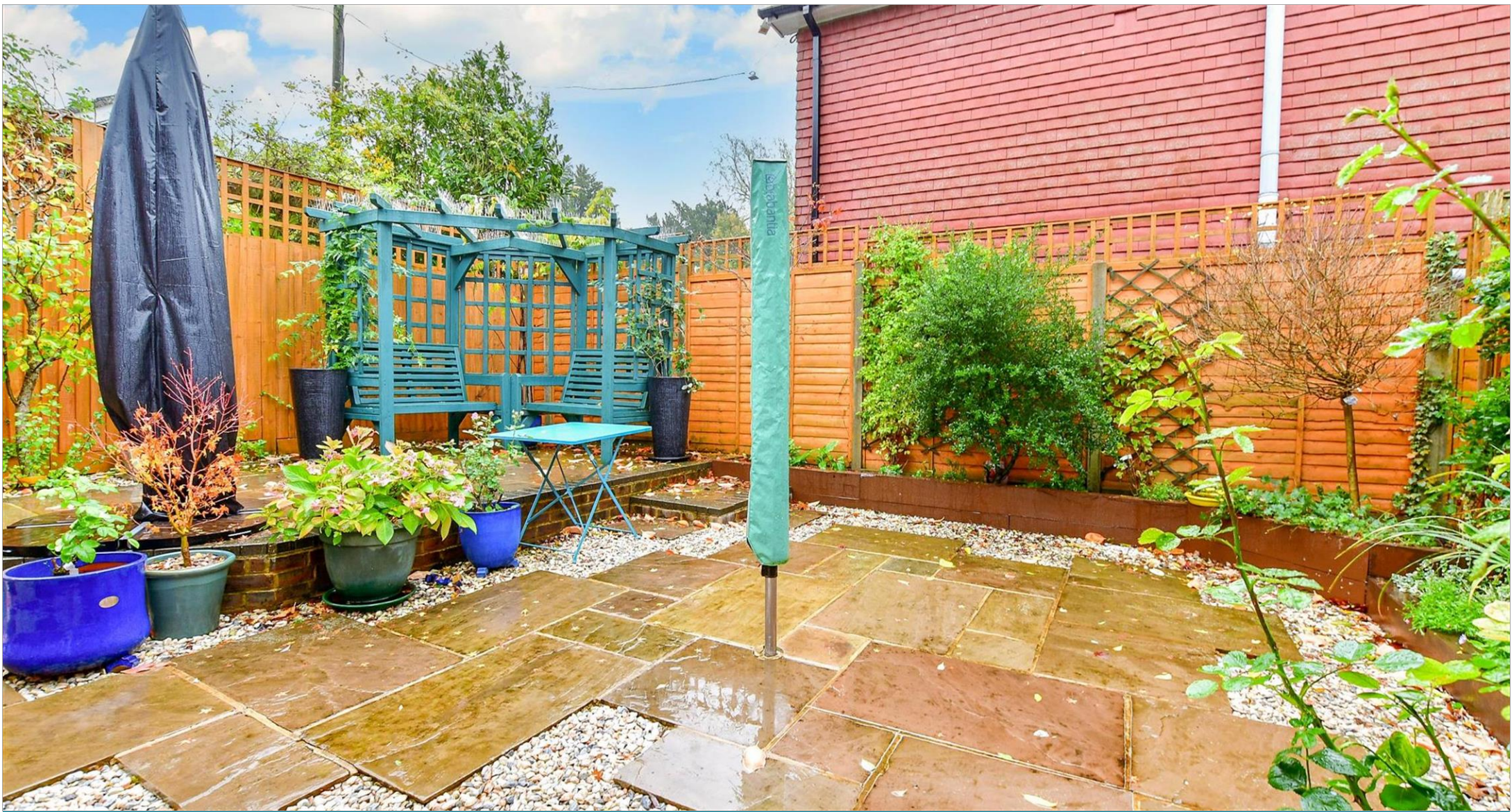
Rogersmead, Tenterden, Kent, TN30



### Directions

For directions to this property please contact us.





*Wards*  
Helping you move forwards

Call Tenterden Branch 01580 766002 ■ [wardsofkent.co.uk](http://wardsofkent.co.uk)



■ Legal advice should be taken to verify fixtures/fittings, planning, alterations and/or lease details ■ Appliances & services are untested, dimensions are approximate and floor plans are not to scale  
■ Through a Homewise Home For Life Plan people aged 60+ can secure this property for up to 59% less, by purchasing a Lifetime Lease.



14006816/20240123/NS/AQ