



Price

£250,000

Leasehold

2x  1x  1x 

**The Street, Bethersden,
Kent, TN26**

OVER 60?

Secure this property
for up to **59% less!**



Video Tour available

Wards

Helping you move forwards



Main features

- **Stunningly presented maisonette**
- **Spacious rooms with social open plan layout**
- **Attractive private garden**
- **Garage with parking**
- **Highly desirable village location convenient for nearby amenities**

Accommodation

GROUND FLOOR

Entrance Hall

FIRST FLOOR

Landing

Lounge/Diner: 19'7 x 16'8 at widest point (5.97m x 5.08m)

Kitchen: 9'10 x 6'1 (3.00m x 1.86m)

Bathroom: 8'7 x 6'9 (2.62m x 2.06m)

Bedroom 1: 12'3 x 11'3 (3.74m x 3.43m)

Bedroom 2: 12'9 x 10'1 (3.89m x 3.08m)

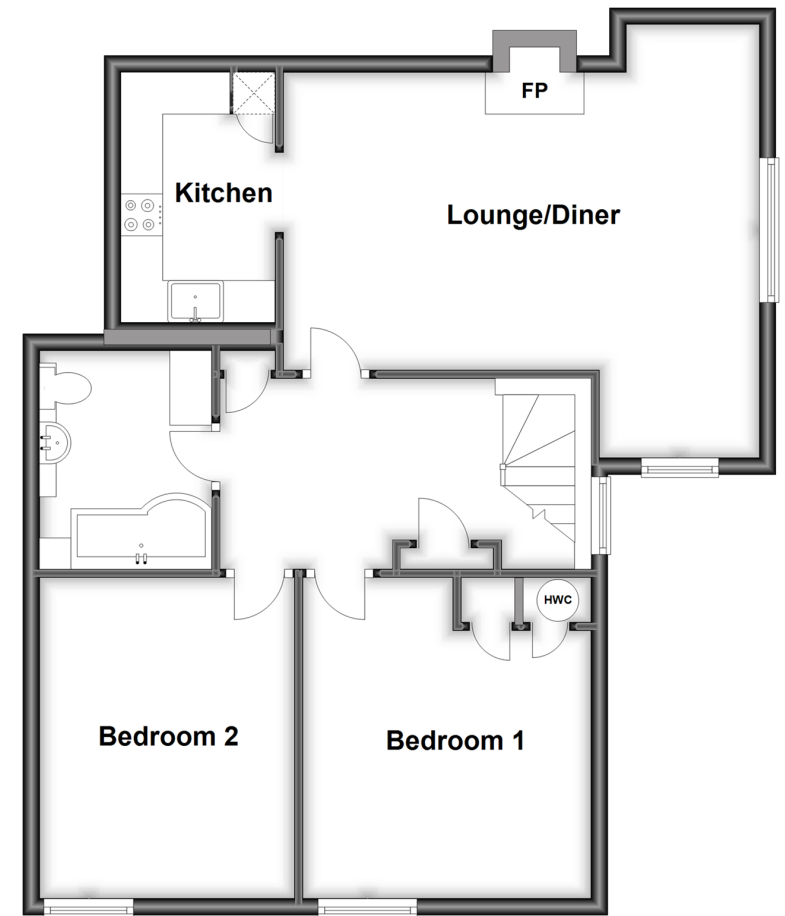
OUTSIDE

Garden

Garage and Parking

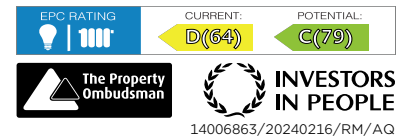
First Floor

Approx. 71.3 sq. metres (767.7 sq. feet)



Call Tenterden - 01580 766002 ■ wardsofkent.co.uk

- Legal advice should be taken to verify fixtures/fittings, planning, alterations and/or lease details
- Appliances & services are untested, dimensions are approximate and floor plans are not to scale
- Through a Homewise Home For Life Plan people aged 60+ can secure this property for up to 59% less, by purchasing a Lifetime Lease.



14006863/20240216/RM/AQ