



Price
£360,000

Freehold

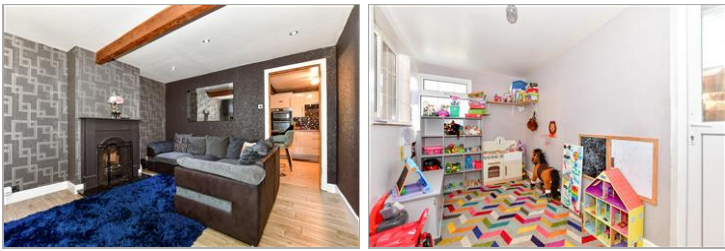
3x  1x  2x 

**Brattle, Woodchurch,
Ashford, Kent, TN26**

OVER 60?

Secure this property
for up to **59% less!**

Wards
Helping you move forwards



Main features

- Impressive 3 bedroom semi-detached house
- Versatile layout to include a family room and conservatory
- Sociable kitchen with large breakfast bar
- Generous private rear garden
- Front drive catering for multiple vehicles

Accommodation

GROUND FLOOR

Porch
Hallway
Bathroom
Lounge: 13'8 x 12'1 (4.17m x 3.69m)
Kitchen: 15'4 x 10'0 (4.68m x 3.05m)
Family Room: 13'0 x 6'3 (3.97m x 1.91m)
Utility Room
Conservatory: 12'11 x 7'10 (3.94m x 2.39m)

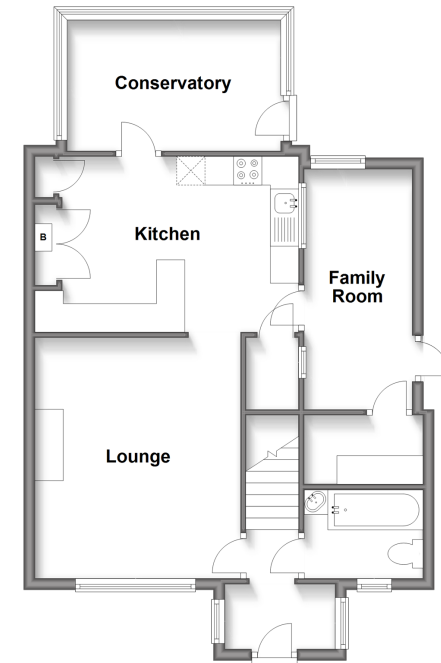
FIRST FLOOR

Landing
Bedroom 1: 12'4 x 11'9 (3.76m x 3.58m)
Bedroom 2: 12'9 x 8'1 (3.89m x 2.47m)
Bedroom 3: 9'11 x 7'2 (3.02m x 2.19m)

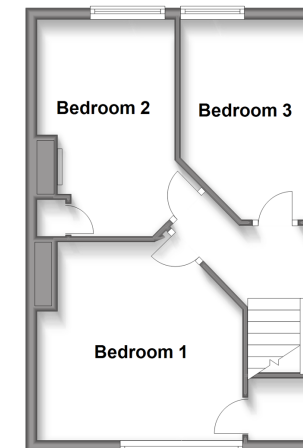
OUTSIDE

Front and Rear Gardens
Driveway

Ground Floor
Approx. 60.7 sq. metres (653.4 sq. feet)



First Floor
Approx. 35.3 sq. metres (379.6 sq. feet)



Call Tenterden - 01580 766002 ■ wardsofkent.co.uk

- Legal advice should be taken to verify fixtures/fittings, planning, alterations and/or lease details
- Appliances & services are untested, dimensions are approximate and floor plans are not to scale
- Through a Homewise Home For Life Plan people aged 60+ can secure this property for up to 59% less, by purchasing a Lifetime Lease.



14006903/20240313/NS/AQ