



Price
£450,000

Freehold

4x  2x  1x 

**Leslie Crescent, St.
Michaels, Tenterden,
Kent, TN30**

OVER 60?

Secure this property
for up to **59% less!**

Wards
Helping you move forwards



Main features

- Offers in the region of £450,000
- 4 bedroom detached double bay fronted family home
- Front extension & garage conversion creating 4th bedroom with en-suite shower room or work from home study
- Open plan lounge/diner
- Private low maintenance rear garden

Accommodation

GROUND FLOOR

Hallway

Lounge/Diner: 33'3 x 12'2 (10.14m x 3.71m)

Kitchen: 11'4 x 7'4 (3.46m x 2.24m)

Study/Bedroom 4

En-Suite Shower Room: 7'11 x 4'10 (2.41m x 1.47m)

FIRST FLOOR

Landing

Bedroom 1: 14'2 x 10'11 (4.32m x 3.33m)

Bedroom 2: 10'8 x 8'7 (3.25m x 2.62m)

Bedroom 3: 9'6 x 9'6 (2.90m x 2.90m)

Bathroom: 9'5 x 7'5 (2.87m x 2.26m)

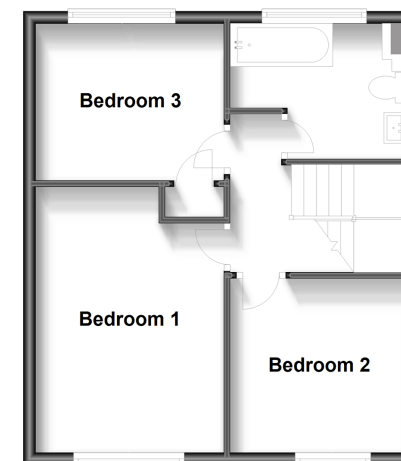
OUTSIDE

Driveway

Front and Rear Gardens

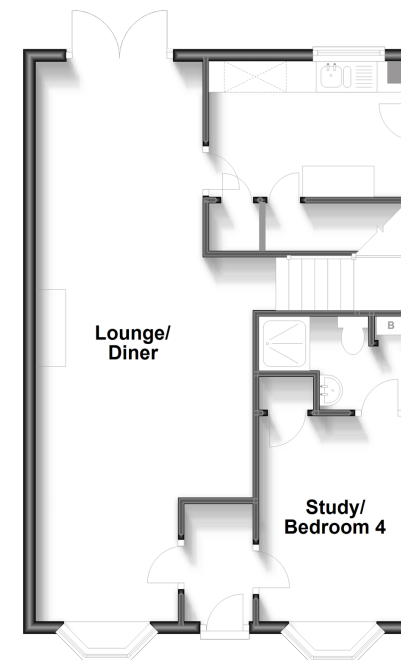
First Floor

Approx. 42.5 sq. metres (457.0 sq. feet)



Ground Floor

Approx. 55.7 sq. metres (599.2 sq. feet)



Call Tenterden - 01580 766002 ■ wardsofkent.co.uk

- Legal advice should be taken to verify fixtures/fittings, planning, alterations and/or lease details
- Appliances & services are untested, dimensions are approximate and floor plans are not to scale
- Through a Homewise Home For Life Plan people aged 60+ can secure this property for up to 59% less, by purchasing a Lifetime Lease.



14007009/20240422/AQ/AQ