



Price
£280,000

Freehold

2x  1x  1x 

**Bridewell Lane,
Tenterden, Kent, TN30**

OVER 60?

Secure this property
for up to **59% less!**



Video Tour available

Wards
Helping you move forwards



Main features

- Offers over £280,000
- Perfect starter home, buy to let or holiday let
- Sought after Tenterden town centre location
- Low maintenance courtyard garden
- Parking available in nearby car park, season tickets available via local authority

Accommodation

GROUND FLOOR

Lounge: 11'6 x 10'4 (3.51m x 3.15m)

Kitchen: 10'2 x 8'6 (3.10m x 2.59m)

FIRST FLOOR

Landing

Bedroom 1: 12'1 x 11'6 (3.69m x 3.51m)

Bathroom: 8'5 x 5'2 (2.57m x 1.58m)

SECOND FLOOR

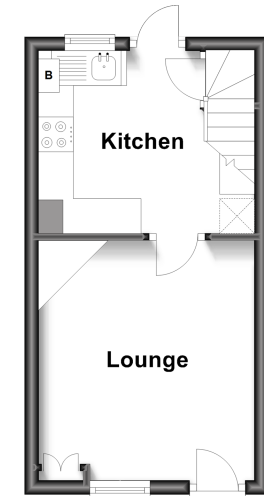
Bedroom 2: 13'3 x 12'10 (4.04m x 3.91m)

OUTSIDE

Courtyard Garden

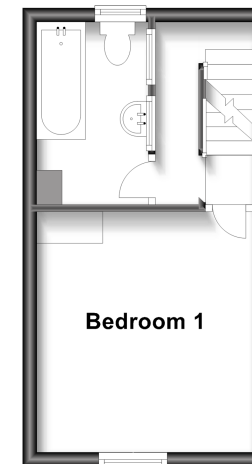
Ground Floor

Approx. 19.1 sq. metres (205.6 sq. feet)



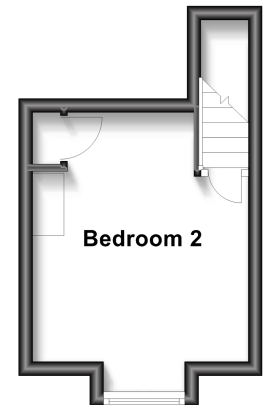
First Floor

Approx. 19.1 sq. metres (205.6 sq. feet)



Second Floor

Approx. 12.5 sq. metres (134.2 sq. feet)



Call Tenterden - 01580 766002 ■ wardsofkent.co.uk

- Legal advice should be taken to verify fixtures/fittings, planning, alterations and/or lease details
- Appliances & services are untested, dimensions are approximate and floor plans are not to scale
- Through a Homewise Home For Life Plan people aged 60+ can secure this property for up to 59% less, by purchasing a Lifetime Lease.



14007370/20230527/NS/OJ