



Price
£365,000

Freehold

3x  2x  1x 

**Bishop Close, High
Halden, Ashford, Kent,
TN26**

OVER 60?

Secure this property
for up to **59% less!**



Video Tour available

Wards
Helping you move forwards



Main features

- Beautiful detached modern home
- NHBC warranty valid till June 2026
- Downstairs under floor heating
- En-suite shower room to bedroom 1
- Huge loft ideal for conversion subject to planning permission
- Set back in a desirable village location

Accommodation

GROUND FLOOR

Entrance Hall

Lounge/Diner: 24'2 x 12'1 (7.37m x 3.69m)

Kitchen: 12'6 x 11'3 (3.81m x 3.43m)

Cloakroom

FIRST FLOOR

Landing

Bedroom 1: 12'11 x 12'0 (3.94m x 3.66m)

En-Suite Shower Room

Bedroom 2: 12'7 x 11'2 (3.84m x 3.41m)

Bedroom 3: 8'11 x 8'5 (2.72m x 2.57m)

Bathroom

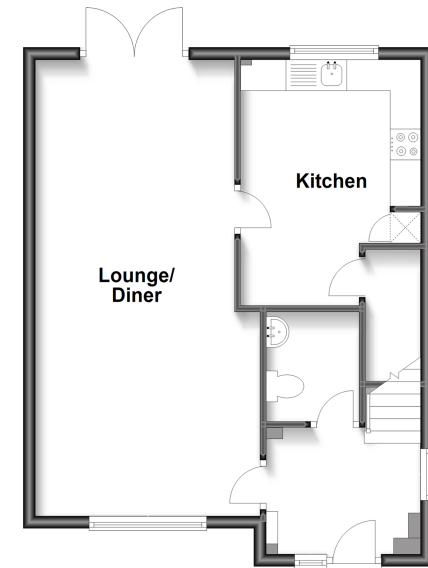
OUTSIDE

Front and Rear Gardens

2 x Allocated Parking Spaces

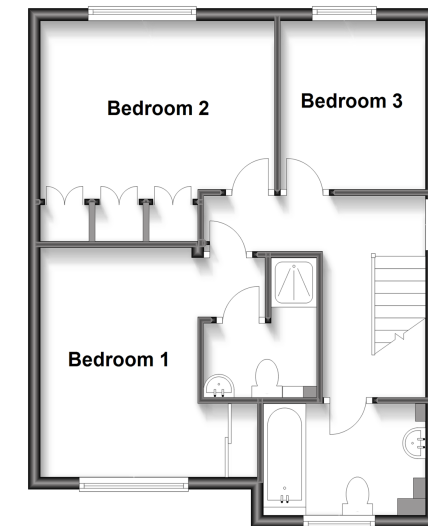
Ground Floor

Approx. 48.5 sq. metres (521.8 sq. feet)



First Floor

Approx. 48.6 sq. metres (522.7 sq. feet)



Call Tenterden - 01580 766002 ■ wardsofkent.co.uk

- Legal advice should be taken to verify fixtures/fittings, planning, alterations and/or lease details
- Appliances & services are untested, dimensions are approximate and floor plans are not to scale
- Through a Homewise Home For Life Plan people aged 60+ can secure this property for up to 59% less, by purchasing a Lifetime Lease.



14007387/20240222/AQ/AQ