

**OVER 60?**

Secure this property  
for up to **59% less!**



**Price**

**£850,000**

**Freehold**

5x  2x  3x 

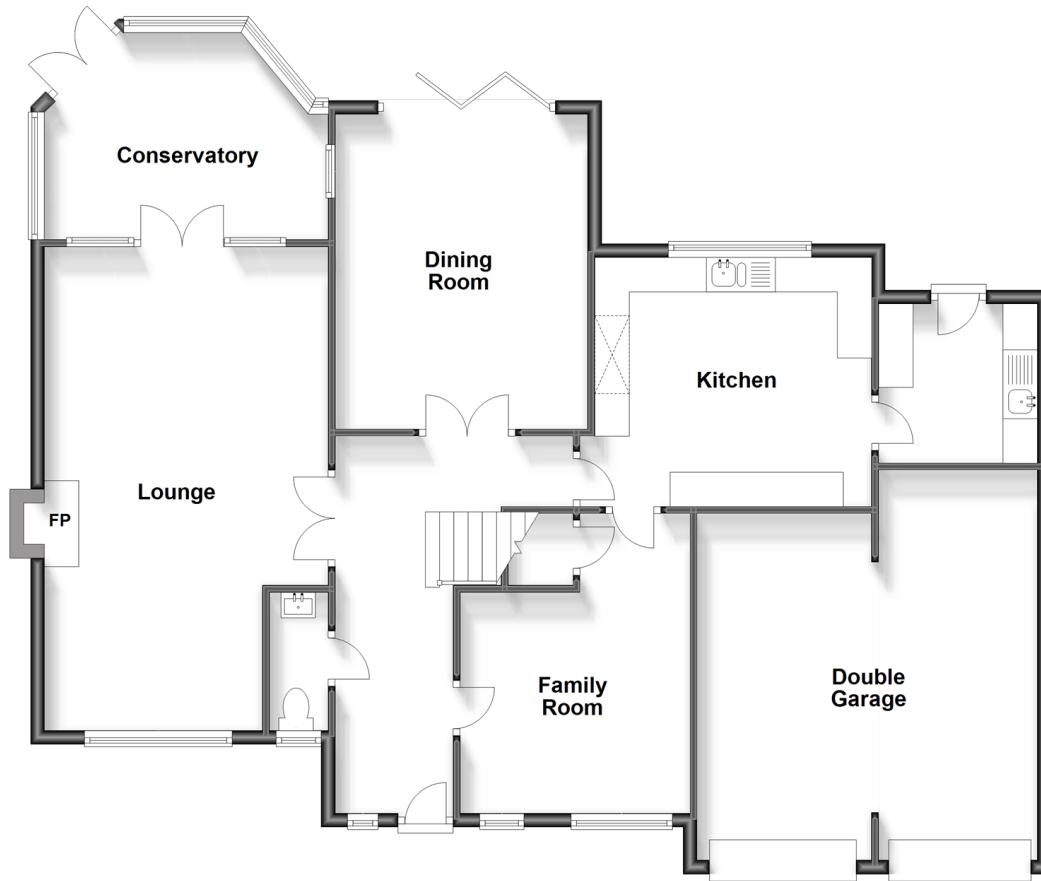
The Meadows, Wittersham, Tenterden,  
Kent, TN30

*Wards*  
Helping you move forwards



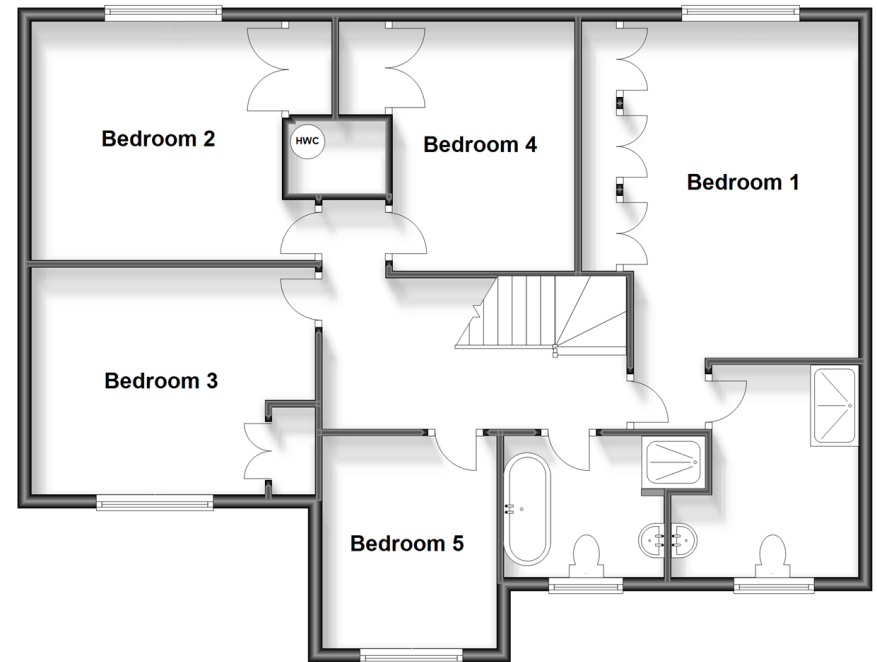
## Ground Floor

Approx. 132.8 sq. metres (1429.1 sq. feet)



## First Floor

Approx. 94.5 sq. metres (1017.4 sq. feet)



## Accommodation

### GROUND FLOOR

Entrance Hall: 17'10 x 5'7 (5.44m x 1.70m)  
 Lounge: 23'5 x 13'5 (7.14m x 4.09m)  
 Dining Room: 13'7 x 12'0 (4.14m x 3.66m)  
 Conservatory: 12'11 x 7'10 (3.94m x 2.39m)  
 Kitchen: 12'10 x 11'10 (3.91m x 3.61m)  
 Utility Room: 7'5 x 7'3 (2.26m x 2.21m)  
 Family Room: 11'1 x 10'5 (3.38m x 3.18m)  
 Cloakroom

### FIRST FLOOR

Landing  
 Bedroom 1: 12'8 x 11'3 (3.86m x 3.43m)  
 En-Suite Shower Room: 9'10 x 8'4 (3.00m x 2.54m)  
 Bedroom 2: 13'5 x 10'11 (4.09m x 3.33m)  
 Bedroom 3: 12'3 x 12'0 (3.74m x 3.66m)  
 Bedroom 4: 11'11 x 8'8 (3.63m x 2.64m)  
 Bedroom 5: 9'11 x 8'3 (3.02m x 2.52m)  
 Bathroom: 7'6 x 6'11 (2.29m x 2.11m)

### OUTSIDE

Front and Rear Gardens  
 Double Garage and Driveway



## Main features

- Stunning 5 bedroom detached house presented in immaculate order
- Generously proportioned inside and out
- Exclusive resident's shared paddock
- Versatile layout to suit all lifestyles
- Double garage with off road parking for multiple cars
- Highly desirable village location



### Nearest Schools

Primary Schools: Wittersham C of E Primary 0.3 miles, Peasmarsh C of E Primary 3.2 miles, Tenterden C of E Junior School 3.5 miles

Secondary Schools: Homewood School and Sixth Form



### Transport Information

Train Stations: Appledore 4.9 miles, Ham Street 7.5 miles, Pluckley 9.9 miles



### Address

The Meadows, Wittersham, Tenterden, Kent, TN30



### Directions

For directions to this property please contact us.





**Wards**  
Helping you move forwards

Call Tenterden Branch 01580 766002 ■ [wardsofkent.co.uk](http://wardsofkent.co.uk)



- If buying to let, the energy rating will need to be improved to at least 'E' rating before you can let the property
- Appliances & services are untested, dimensions are approximate and floor plans are not to scale

- Legal advice should be taken to verify fixtures/fittings, planning, alterations and/or lease details
- Through a Homewise Home For Life Plan people aged 60+ can secure this property for up to 59% less, by purchasing a Lifetime Lease.



14007407/20230703/NS/LH