

**OVER 60?**

Secure this property  
for up to **59% less!**



**Price**

**£675,000**

**Freehold**

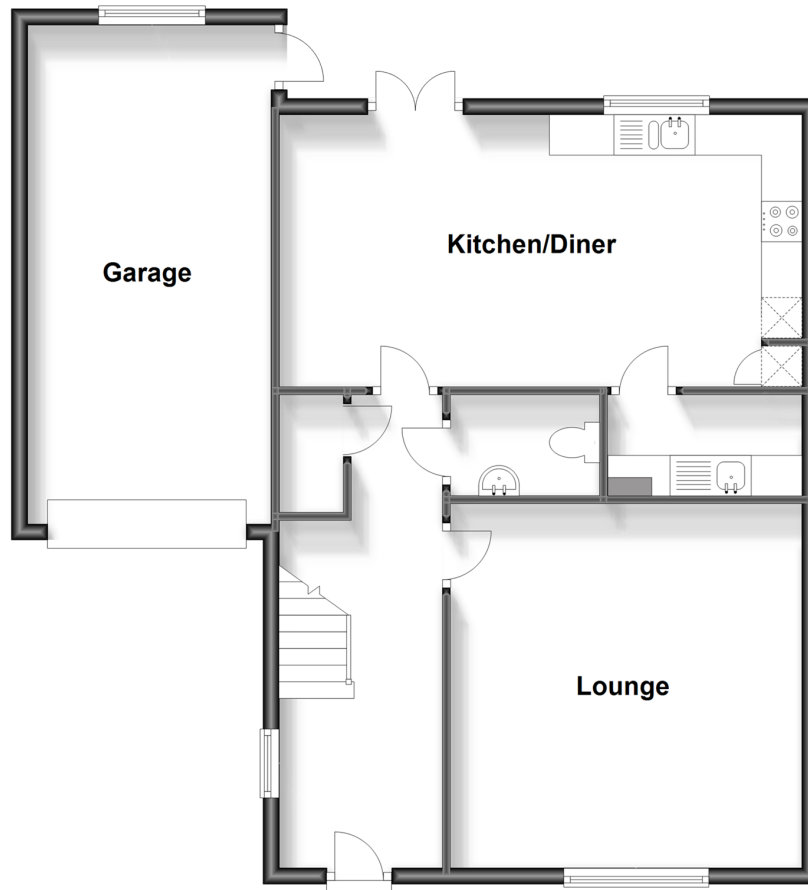
4x  2x  1x 

Halden Field, Rolvenden, Kent, TN17

*Wards*  
Helping you move forwards

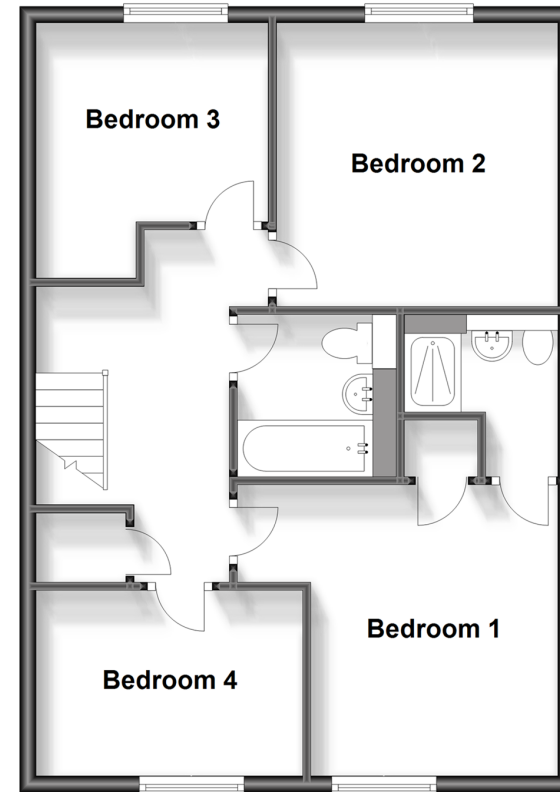
## Ground Floor

Approx. 79.1 sq. metres (851.1 sq. feet)



## First Floor

Approx. 60.1 sq. metres (646.4 sq. feet)



## Accommodation

### GROUND FLOOR

Entrance Hall: 19'10 x 6'0 (6.05m x 1.83m)

Lounge: 20'9 x 11'9 (6.33m x 3.58m)

Kitchen/Diner: 20'11 x 11'0 (6.38m x 3.36m)

Utility Room: 8'1 x 3'4 (2.47m x 1.02m)

Cloakroom

### FIRST FLOOR

Landing

Bathroom: 9'10 x 7'8 (3.00m x 2.34m)

Bedroom 1: 12'7 x 11'5 (3.84m x 3.48m)

En-Suite Shower Room

Bedroom 2: 11'7 x 9'1 (3.53m x 2.77m)

Bedroom 3: 12'8 x 10'2 (3.86m x 3.10m)

Bedroom 4: 12'8 x 10'2 (3.86m x 3.10m)

### OUTSIDE

Garage & Off-Road Parking

Front & Rear Gardens





## Main features

- Immaculately presented throughout
- Social open plan kitchen/dining area
- Fabulous bedroom 1 with en-suite shower room
- Landscaped rear garden with beautiful panoramic countryside views
- Garage & off-road parking, chain free
- Cranbrook School Catchment Area



### Nearest Schools

Primary Schools: Rolvenden Primary 0.4 miles, Benenden C of E Primary 2.4 miles, Tenterden C of E Junior School 2.6 miles  
Secondary Schools: Benenden School 2.9 miles, Homewood School and Sixth Form Centre 3.0 miles,



### Transport Information

Train Stations: Headcorn 7.6 miles, Appledore 8.0 miles, Pluckley 8.6 miles



### Address

Halden Field, Rolvenden, Kent, TN17



### Directions

For directions to this property please contact us.





Call Tenterden Branch 01580 766002 ■ [wardsofkent.co.uk](https://wardsofkent.co.uk)



- Legal advice should be taken to verify fixtures/fittings, planning, alterations and/or lease details
- Appliances & services are untested, dimensions are approximate and floor plans are not to scale
- Through a Homewise Home For Life Plan people aged 60+ can secure this property for up to 59% less, by purchasing a Lifetime Lease.



14007445/20231016/NS/LH