



Price
£152,250

Leasehold

3x  1x  1x 

**Springfield Drive, Rye,
East Sussex, TN31**



Video Tour available

Wards
Helping you move forwards



Main features

- Shared ownership - 35% share
- Beautiful modern 3 bedroom terraced house
- Bright spacious rooms throughout
- Attractive private rear garden
- Two allocated parking spaces
- Highly desirable location within easy reach of the town centre, station and harbour

Accommodation

GROUND FLOOR

Entrance Hall

Kitchen/Diner: 17'0 x 9'8 (5.19m x 2.95m)

Cloakroom

Lounge: 20'3 x 10'6 (6.18m x 3.20m)

FIRST FLOOR

Landing

Bedroom 1: 14'2 x 9'9 (4.32m x 2.97m)

Bedroom 2: 14'10 x 10'0 (4.52m x 3.05m)

Bedroom 3: 9'10 x 8'0 (3.00m x 2.44m)

Bathroom: 7'1 x 6'4 (2.16m x 1.93m)

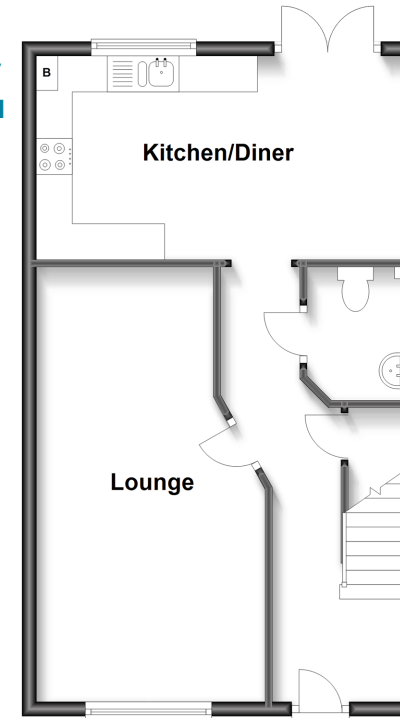
OUTSIDE

Front and Rear Gardens

Allocated Parking x 2

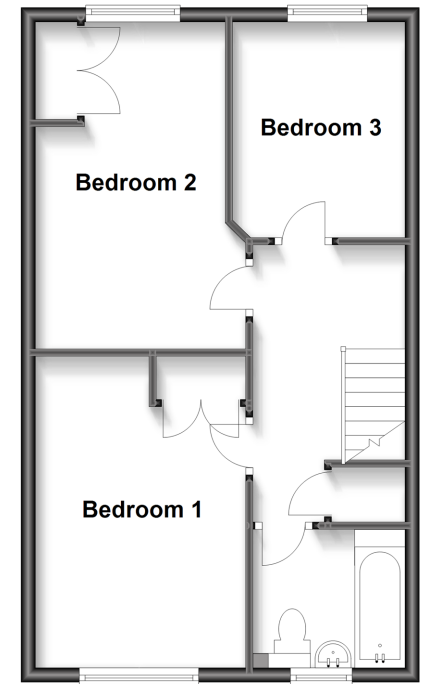
Ground Floor

Approx. 46.2 sq. metres (497.2 sq. feet)



First Floor

Approx. 46.2 sq. metres (497.2 sq. feet)



Call Tenterden - 01580 766002 ■ wardsofkent.co.uk

- Legal advice should be taken to verify fixtures/fittings, planning, alterations and/or lease details
- Appliances & services are untested, dimensions are approximate and floor plans are not to scale



14007449/20230309/NS/AQ