



**Price**  
**£550,000**

**Freehold**

4x  2x  2x 

**Mansion House Close,  
Biddenden, Ashford,  
Kent, TN27**

**OVER 60?**

Secure this property  
for up to **59% less!**



**Video Tour available**

**Wards**  
Helping you move forwards





## Main features

- Beautiful 4 bedroom house
- Good size lounge and dining area with separate kitchen
- Low maintenance rear garden
- Garage and off road parking
- Highly desirable village location with popular amenities to hand

## Accommodation

### GROUND FLOOR

Entrance Hall  
 Kitchen: 12'11 x 9'6 (3.94m x 2.90m)  
 Utility: 8'0 x 5'2 (2.44m x 1.58m)  
 Dining Area: 11'11 x 9'2 (3.63m x 2.80m)  
 Conservatory: 11'8 x 6'0 (3.56m x 1.83m)  
 Lounge: 17'2 x 12'4 (5.24m x 3.76m)  
 Cloakroom

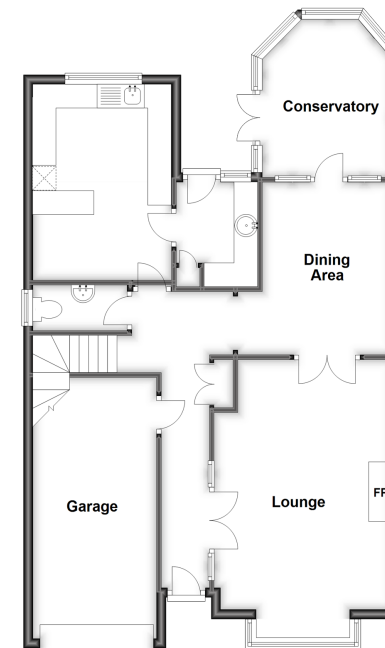
### FIRST FLOOR

Landing  
 Bedroom 1: 16'11 x 13'7 (5.16m x 4.14m)  
 En-Suite Bathroom: 8'7 x 7'2 (2.62m x 2.19m)  
 Bedroom 2: 13'4 x 8'8 (4.07m x 2.64m)  
 Bedroom 3: 10'9 x 7'4 (3.28m x 2.24m)  
 Bedroom 4: 9'4 x 8'9 (2.85m x 2.67m)  
 Shower Room: 8'7 x 5'6 (2.62m x 1.68m)

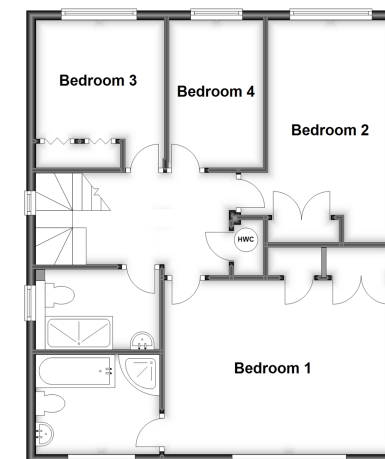
### OUTSIDE

Front and Rear Gardens  
 Garage and Driveway

**Ground Floor**  
 Approx. 84.7 sq. metres (911.2 sq. feet)



**First Floor**  
 Approx. 69.6 sq. metres (749.4 sq. feet)



**Call Tenterden - 01580 766002 ■ [wardsofkent.co.uk](http://wardsofkent.co.uk)**

- Legal advice should be taken to verify fixtures/fittings, planning, alterations and/or lease details
- Appliances & services are untested, dimensions are approximate and floor plans are not to scale
- Through a Homewise Home For Life Plan people aged 60+ can secure this property for up to 59% less, by purchasing a Lifetime Lease.