



OVER 60?

Secure this property
for up to **59% less!**

Price

£389,995

Freehold

3x  1x  1x 

**Bishop Close, High
Halden, Ashford, Kent,
TN26**

Wards
Helping you move forwards



Main features

- Stunning brand new home
- Generous room sizes throughout
- Luxury bathroom and top of the range kitchen
- 2 allocated parking bays with electric charging point
- Desirable village location within easy reach of high speed trains from Ashford

Accommodation

GROUND FLOOR

Entrance Hall

Lounge: 16'5 x 15'7 (5.01m x 4.75m)

Kitchen: 13'0 x 13'0 (3.97m x 3.97m)

Cloakroom

FIRST FLOOR

Landing

Bedroom 1: 14'6 x 11'4 (4.42m x 3.46m)

Bedroom 2: 16'2 x 11'5 (4.93m x 3.48m)

Bedroom 3: 10'3 x 8'10 (3.13m x 2.69m)

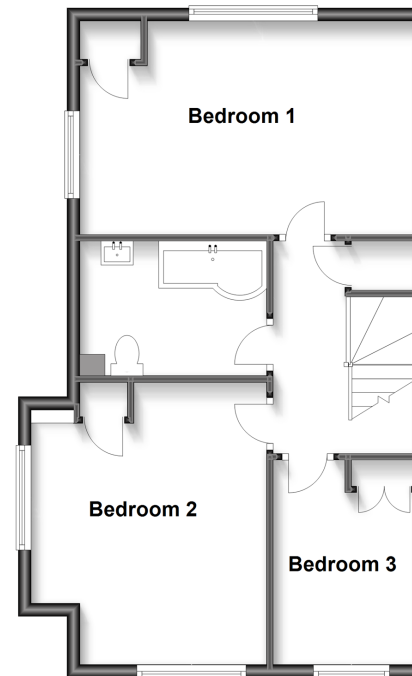
Bathroom: 8'9 x 6'9 (2.67m x 2.06m)

OUTSIDE

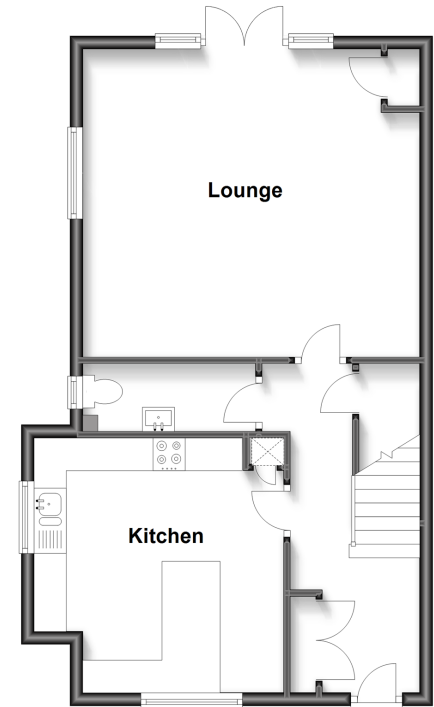
Front and Rear Gardens

2 x Parking Bays

First Floor
Approx. 53.9 sq. metres (580.1 sq. feet)



Ground Floor
Approx. 53.9 sq. metres (580.1 sq. feet)



Call Tenterden - 01580 766002 ■ wardsofkent.co.uk

- If buying to let, the energy rating will need to be improved to at least 'E' rating before you can let the property
- Legal advice should be taken to verify fixtures/fittings, planning, alterations and/or lease details
- Appliances & services are untested, dimensions are approximate and floor plans are not to scale
- Through a Homewise Home For Life Plan people aged 60+ can secure this property for up to 59% less, by purchasing a Lifetime Lease.



14007460/20230130/AQ/AQ