

OVER 60?

Secure this property
for up to **59% less!**



Price

£575,000

Freehold

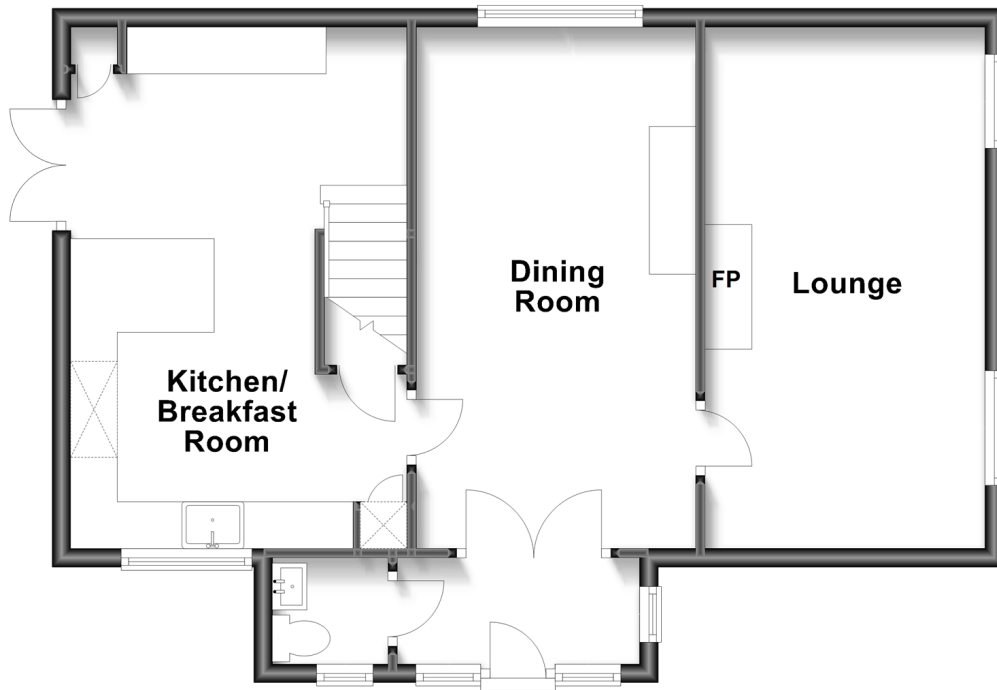
4x  2x  2x 

Hookstead, High Halden, Ashford, Kent,
TN26

Wards
Helping you move forwards

Ground Floor

Approx. 59.6 sq. metres (641.4 sq. feet)



First Floor

Approx. 54.7 sq. metres (588.9 sq. feet)



Accommodation

GROUND FLOOR

Porch
Entrance Hall
Lounge: 18'4 x 9'10 (5.59m x 3.00m)
Dining Room: 18'4 x 9'10 (5.59m x 3.00m)
Kitchen/Breakfast Room: 18'4 x 12'1 (5.59m x 3.69m)
Cloakroom

FIRST FLOOR

Landing
Bedroom 1: 15'2 x 9'11 (4.63m x 3.02m)
En-Suite Shower Room
Bedroom 2: 10'2 x 9'7 (3.10m x 2.92m)
Bedroom 3: 10'9 x 8'8 (3.28m x 2.64m)
Bedroom 4: 8'2 x 6'9 (2.49m x 2.06m)
Bathroom: 7'3 x 6'4 (2.21m x 1.93m)

OUTSIDE

Front and Rear Gardens
Driveway



Main features

- Recently renovated country farm house
- Open plan kitchen breakfast room
- Bedroom 1 complete with en-suite shower room
- Highly desirable rural location
- Chain free



Nearest Schools

Primary Schools: High Halden C of E Primary 0.7 miles, St Michael's C of E Primary (Tenterden) 1.4 miles, John Mayne C of E Primary, Biddenden 2.4 miles

Secondary Schools: Homewood School and Sixth Form



Transport Information

Train Stations: Pluckley 4.1 miles, Headcorn 5.2 miles, Appledore 7.1 miles



Address

Hookstead, High Halden, Ashford, Kent, TN26



Directions

For directions to this property please contact us.



Call Tenterden Branch 01580 766002 ■ wardsofkent.co.uk



- The seller is a person connected with Wards as defined in the Estate Agents Act 1979
- Appliances & services are untested, dimensions are approximate and floor plans are not to scale

- Legal advice should be taken to verify fixtures/fittings, planning, alterations and/or lease details
- Through a Homewise Home For Life Plan people aged 60+ can secure this property for up to 59% less, by purchasing a Lifetime Lease.



14007475/20230424/AQ/AQ