



Price
£700,000

Freehold

5x  3x  2x 

**Lossenham Lane,
Newenden, Kent, TN18**

OVER 60?

Secure this property
for up to **59% less!**

Wards
Helping you move forwards



Main features

- Offers over £700,000
- Stunning detached 4/5 bedroom house
- Fabulous views over the cricket pitch and River Rother
- Free flowing open plan kitchen/diner
- Ample facilities to include the family bathroom, shower room and en-suite

Accommodation

GROUND FLOOR

Porch
 Entrance Hall
 Lounge: 25'5 x 11'10 (7.75m x 3.61m)
 Kitchen/Diner: 22'1 at widest point x 19'1 (6.74m x 5.82m)
 Utility: 9'4 x 5'7 (2.85m x 1.70m)
 Cinema Room/Bedroom 5: 15'8 x 9'5 (4.78m x 2.87m)
 Shower Room: 8'5 x 5'3 (2.57m x 1.60m)
 Office/Storage Room: 13'0 x 9'5 (3.97m x 2.87m)

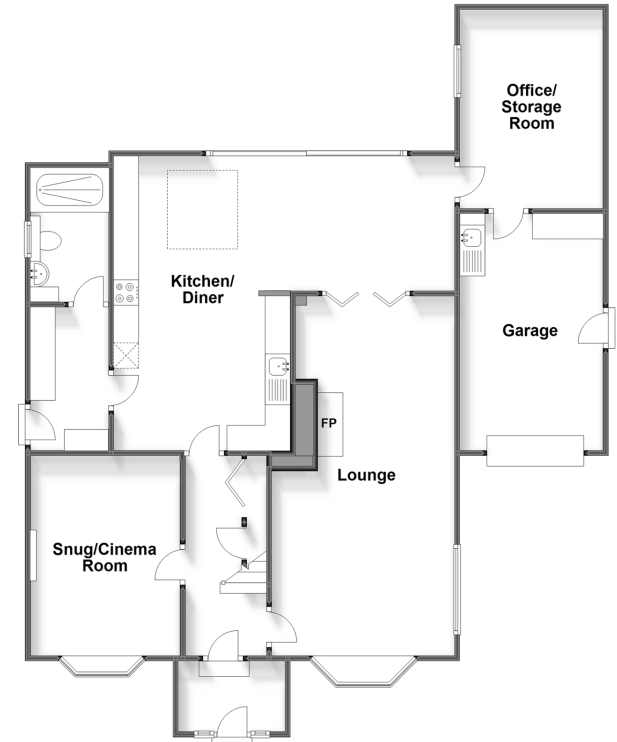
FIRST FLOOR

Landing
 Bedroom 1: 12'2 x 9'9 (3.71m x 2.97m)
 En-Suite Shower Room
 Bedroom 2: 11'1 x 9'7 (3.38m x 2.92m)
 Bedroom 3: 10'3 x 9'3 (3.13m x 2.82m)
 Bedroom 4: 9'8 x 9'8 (2.95m x 2.95m)
 Bathroom: 8'0 x 5'8 (2.44m x 1.73m)

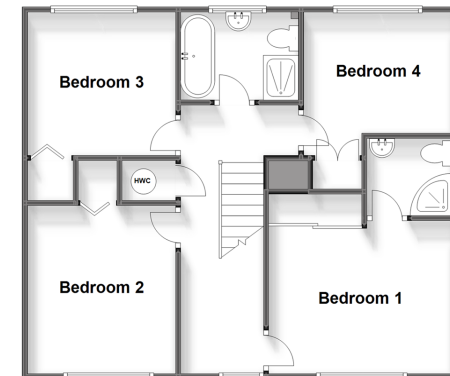
OUTSIDE

Front and Rear Gardens
 Garage: 15'9 x 10'4 (4.80m x 3.15m)
 Driveway

Ground Floor
 Approx. 112.1 sq. metres (1206.6 sq. feet)

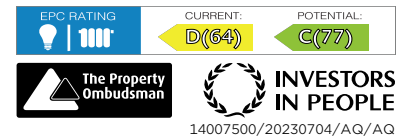


First Floor
 Approx. 60.2 sq. metres (648.0 sq. feet)



Call Tenterden - 01580 766002 ■ wardsofkent.co.uk

- Legal advice should be taken to verify fixtures/fittings, planning, alterations and/or lease details
- Appliances & services are untested, dimensions are approximate and floor plans are not to scale
- Through a Homewise Home For Life Plan people aged 60+ can secure this property for up to 59% less, by purchasing a Lifetime Lease.



14007500/20230704/AQ/AQ