

**OVER 60?**

Secure this property  
for up to **59% less!**



Video Tour available

**Price**  
**£200,000**  
**Freehold**

2x 1x 1x

Rectory Close, Woodchurch, Ashford,  
Kent, TN26

*Wards*  
Helping you move forwards





## Main features

- **\*Offers over £200,000\***
- **Bright and airy 2 bedroom mid-terrace house**
- **Open plan kitchen and lounge areas**
- **Private rear garden**
- **Allocated parking space**
- **Highly desirable village location**
- **Chain free**

## Accommodation

### GROUND FLOOR

Entrance Hall

Kitchen: 15'0 x 6'7 (4.58m x 2.01m)

Lounge: 15'10 x 14'11 (4.83m x 4.55m)

### FIRST FLOOR

Landing

Bedroom 1: 11'9 x 10'3 (3.58m x 3.13m)

Bedroom 2: 9'11 x 7'11 (3.02m x 2.41m)

Bathroom: 6'7 x 6'4 (2.01m x 1.93m)

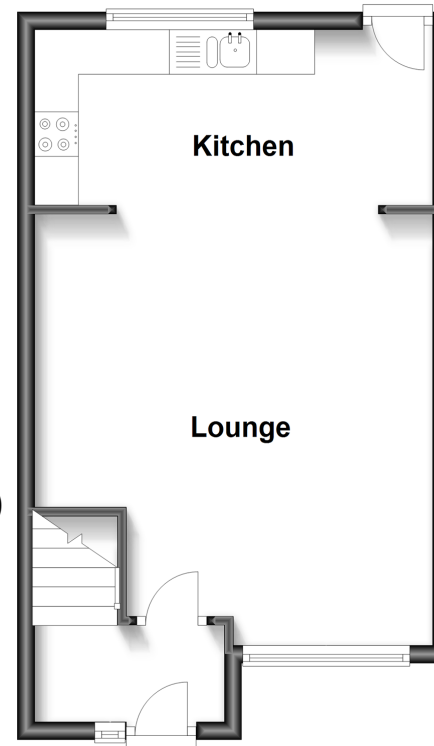
### OUTSIDE

Rear Garden

Allocated Parking to Rear

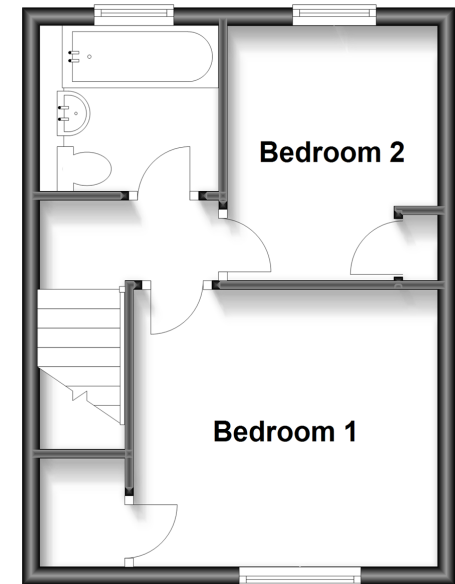
### Ground Floor

Approx. 33.4 sq. metres (359.0 sq. feet)



### First Floor

Approx. 27.7 sq. metres (298.1 sq. feet)



**Call Tenterden - 01580 766002 ■ [wardsofkent.co.uk](http://wardsofkent.co.uk)**

- Legal advice should be taken to verify fixtures/fittings, planning, alterations and/or lease details
- Appliances & services are untested, dimensions are approximate and floor plans are not to scale
- Through a Homewise Home For Life Plan people aged 60+ can secure this property for up to 59% less, by purchasing a Lifetime Lease.



14007501/20230916/NS/AQ