



**Price**  
**£750,000**

**Freehold**

5x  3x  2x 

**Three Fields Road,  
Tenterden, Kent, TN30**

**OVER 60?**

Secure this property  
for up to **59% less!**

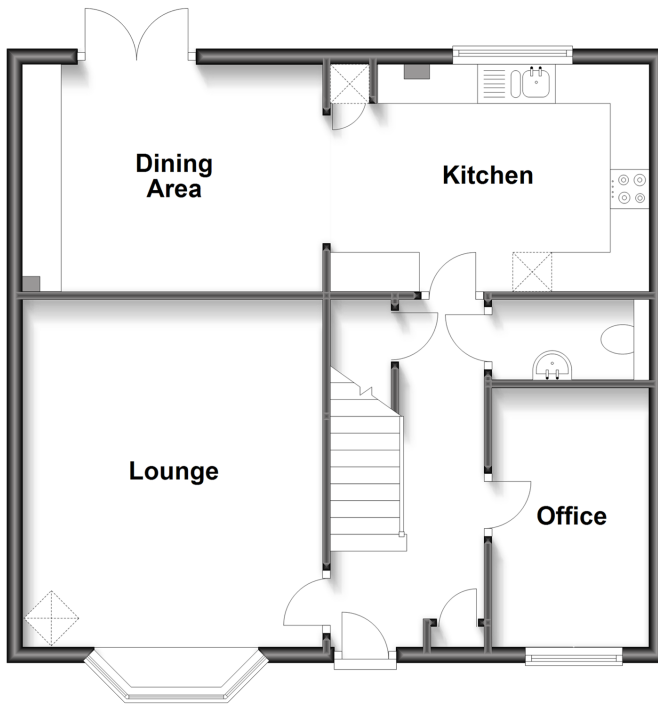


Video Tour available

*Wards*  
Helping you move forwards

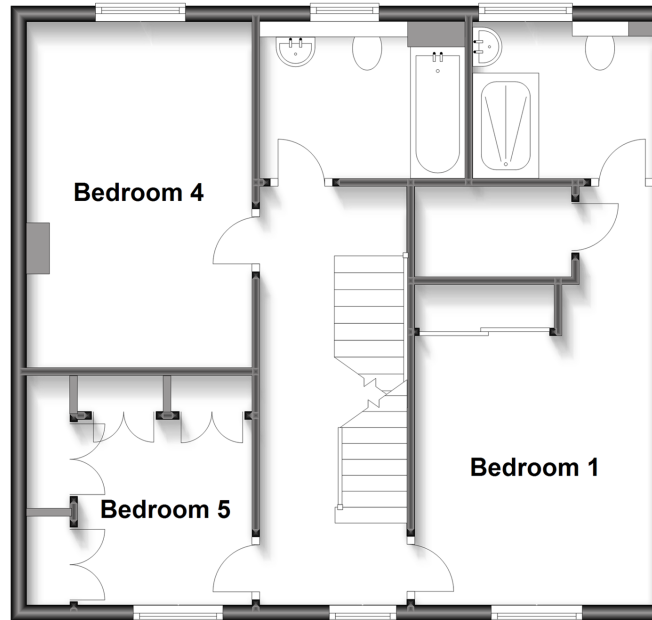
### Ground Floor

Approx. 61.0 sq. metres (656.6 sq. feet)



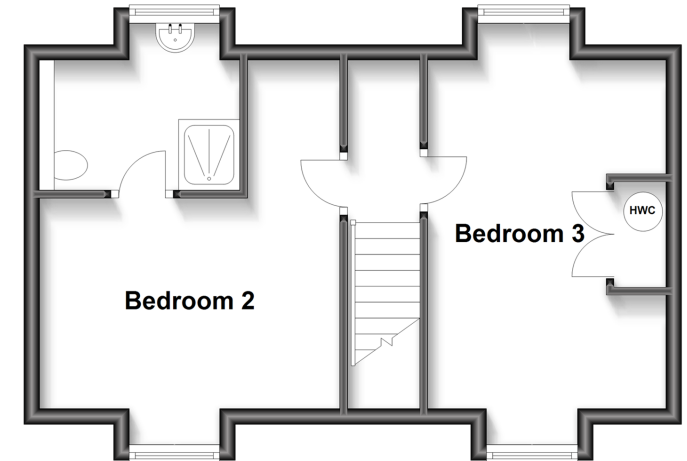
### First Floor

Approx. 60.0 sq. metres (645.5 sq. feet)



### Second Floor

Approx. 38.0 sq. metres (409.5 sq. feet)



## Accommodation

### GROUND FLOOR

Entrance Hall  
Lounge: 17'3 x 13'0 (5.26m x 3.97m)  
Office: 10'10 x 6'2 (3.30m x 1.88m)  
Kitchen : 13'3 x 9'6 (4.04m x 2.90m)  
Dining Area: 12'5 x 9'6 (3.79m x 2.90m)  
Cloakroom

### FIRST FLOOR

Landing  
Bedroom 1: 17'3 x 9'8 (5.26m x 2.95m)  
En-Suite Shower Room  
Bedroom 4: 14'7 x 9'7 (4.45m x 2.92m)  
Bedroom 5: 7'11 up to fitted cupboard x 7'8 up to fitted cupboard (2.41m x 2.34m)

### Bathroom

### SECOND FLOOR

Landing  
Bedroom 2: 12'10 x 10'8 (3.91m x 3.25m)  
En-Suite Shower Room: 8'9 x 6'11 (2.67m x 2.11m)  
Bedroom 3: 17'6 x 9'10 (5.34m x 3.00m)

### OUTSIDE

Front and Rear Gardens  
Cabin  
Car Port and Driveway





## Main features

- Stunning 5 bedroom detached house presented in immaculate order
- Free flowing kitchen/diner
- Exceptional garden cabin (office/gym/children's hideaway)
- 2 en-suites in addition to the family bathroom
- Highly sought after location moments from the high street with a beautiful outlook



### Nearest Schools

Primary Schools: Tenterden C of E Junior School 0.2 miles, St Michael's C of E Primary (Tenterden) 1.5 miles, Rolvenden Primary 2.6 miles

Secondary Schools: Homewood School and Sixth Form



### Transport Information

Train Stations: Appledore 5.8 miles, Pluckley 7.0 miles, Ham Street 7.2 miles



### Address

Three Fields Road, Tenterden, Kent, TN30



### Directions

For directions to this property please contact us.





**Wards**  
Helping you move forwards

Call Tenterden Branch 01580 766002 ■ [wardsofkent.co.uk](https://wardsofkent.co.uk)



■ Legal advice should be taken to verify fixtures/fittings, planning, alterations and/or lease details ■ Appliances & services are untested, dimensions are approximate and floor plans are not to scale  
■ Through a Homewise Home For Life Plan people aged 60+ can secure this property for up to 59% less, by purchasing a Lifetime Lease.



14007504/20230412/LH/AQ