

**OVER 60?**

Secure this property  
for up to **59% less!**



**Price**

**£500,000**

**Freehold**

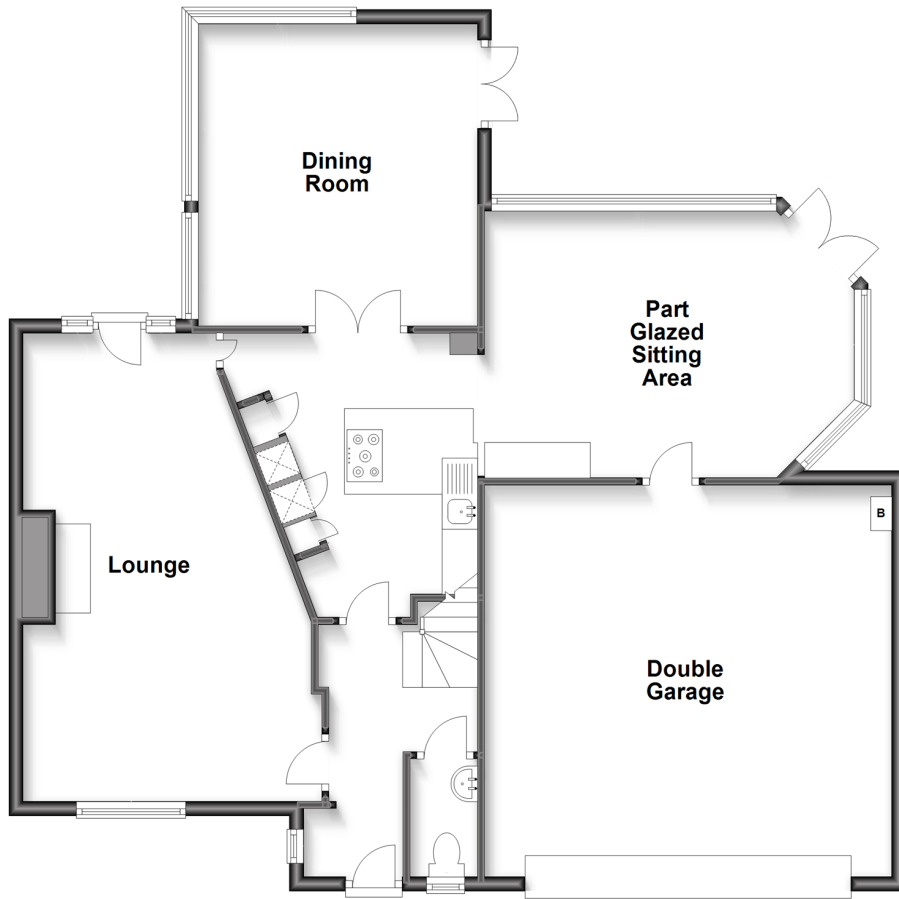
3x  2x  2x 

Westwell Court, Tenterden, Kent, TN30

**Wards**  
Helping you move forwards

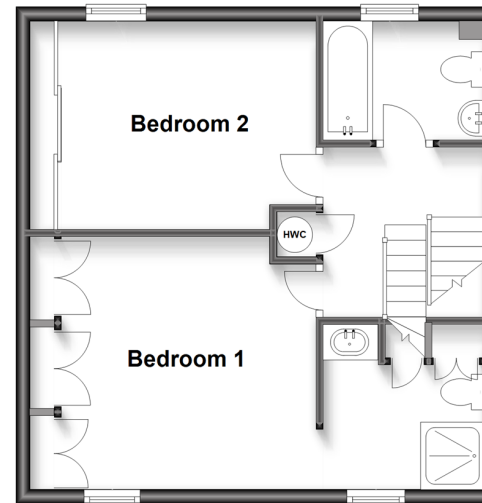
## Ground Floor

Approx. 113.3 sq. metres (1219.0 sq. feet)



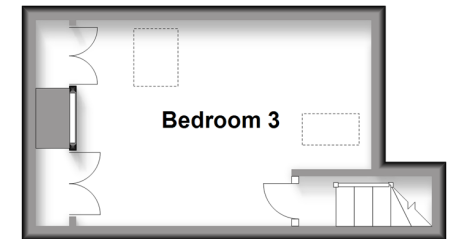
## First Floor

Approx. 42.2 sq. metres (454.6 sq. feet)



## Second Floor

Approx. 14.3 sq. metres (153.5 sq. feet)



## Accommodation

### GROUND FLOOR

Entrance Hall

Lounge: 21'9 x 14'2 (6.63m x 4.32m)

Dining Room: 14'7 x 13'11 (4.45m x 4.24m)

Part Glazed Sitting Area: 17'8 x 12'10 (5.39m x 3.91m)

Cloakroom

### FIRST FLOOR

Landing

Bedroom 1: 13'7 x 12'0 (4.14m x 3.66m)

En-Suite Shower Room: 7'11 x 7'6 (2.41m x 2.29m)

Bedroom 2: 14'1 x 9'9 (4.30m x 2.97m)

Bathroom: 7'6 x 5'5 (2.29m x 1.65m)

### SECOND FLOOR

Bedroom 3: 15'7 x 9'5 (4.75m x 2.87m)

### OUTSIDE

Front and Rear Gardens

Double Garage

Driveway





## Main features

- Spacious, bright, light and airy house
- Huge double garage with potential to convert to living space subject to planning permission
- Conservatory in addition to the dining room
- En-suite shower room to bedroom 1
- Highly sought after Tenterden location



### Nearest Schools

Primary Schools: Tenterden C of E Junior School 0.4 miles, St Michael's C of E Primary (Tenterden) 1.4 miles, Rolvenden Primary 2.4 miles

Secondary Schools: Homewood School and Sixth Form



### Transport Information

Train Stations: Appledore 6.2 miles, Pluckley 6.9 miles, Headcorn 7.3 miles



### Address

Westwell Court, Tenterden, Kent, TN30



### Directions

For directions to this property please contact us.





**Wards**  
Helping you move forwards

Call Tenterden Branch 01580 766002 ■ [wardsofkent.co.uk](http://wardsofkent.co.uk)



- Legal advice should be taken to verify fixtures/fittings, planning, alterations and/or lease details
- Appliances & services are untested, dimensions are approximate and floor plans are not to scale
- Through a Homewise Home For Life Plan people aged 60+ can secure this property for up to 59% less, by purchasing a Lifetime Lease.



14007519/20230527/NS/AQ