



**Price**  
**£225,000**  
**Leasehold**

2x  1x  1x 

Cedar Court, Woodbury Lane, Tenterden,  
Kent, TN30

*Wards*  
Helping you move forwards





## Main features

- Second floor retirement flat
- Warden assisted and 24 hour call line
- Lift to all floors
- Resident's lounge, guest suite and communal laundry
- Central location with easy access to nearly all of Tenterden's amenities
- Resident's parking

## Accommodation

### SECOND FLOOR

Entrance Hall

Lounge: 12'10 x 11'6 (3.91m x 3.51m)

Kitchen: 7'4 x 7'4 (2.24m x 2.24m)

Bedroom 1: 13'6 x 9'1 (4.12m x 2.77m)

Bedroom 2: 13'1 x 8'0 (3.99m x 2.44m)

Shower Room: 6'9 x 6'0 (2.06m x 1.83m)

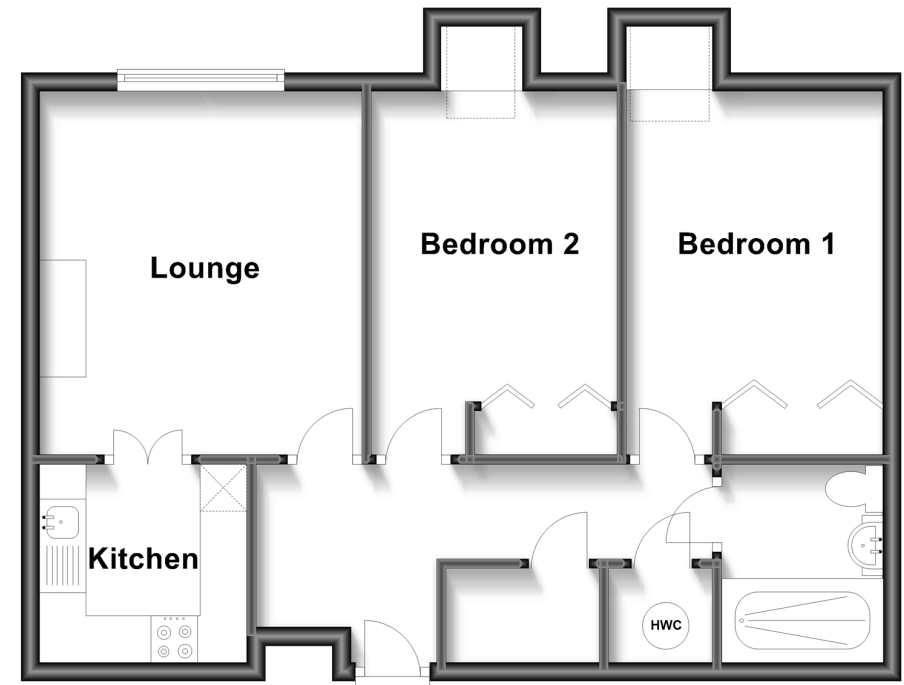
### OUTSIDE

Resident's Parking

Communal Gardens

## Second Floor

Approx. 56.3 sq. metres (605.7 sq. feet)



**Call Tenterden - 01580 766002 ■ [wardsofkent.co.uk](http://wardsofkent.co.uk)**

■ Legal advice should be taken to verify fixtures/fittings, planning, alterations and/or lease details

■ Appliances & services are untested, dimensions are approximate and floor plans are not to scale



14007548/20230515/NS/AQ