

OVER 60?

Secure this property
for up to **59% less!**



Price

£450,000

Freehold

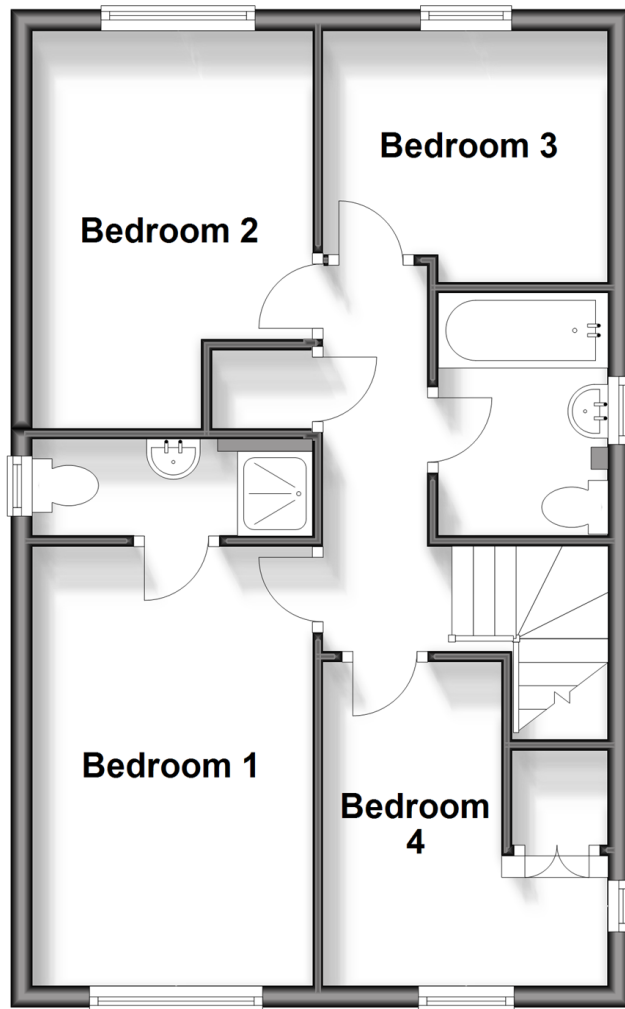
4x  2x  2x 

Henley Meadows, St. Michaels, Tenterden,
Kent, TN30

Wards
Helping you move forwards

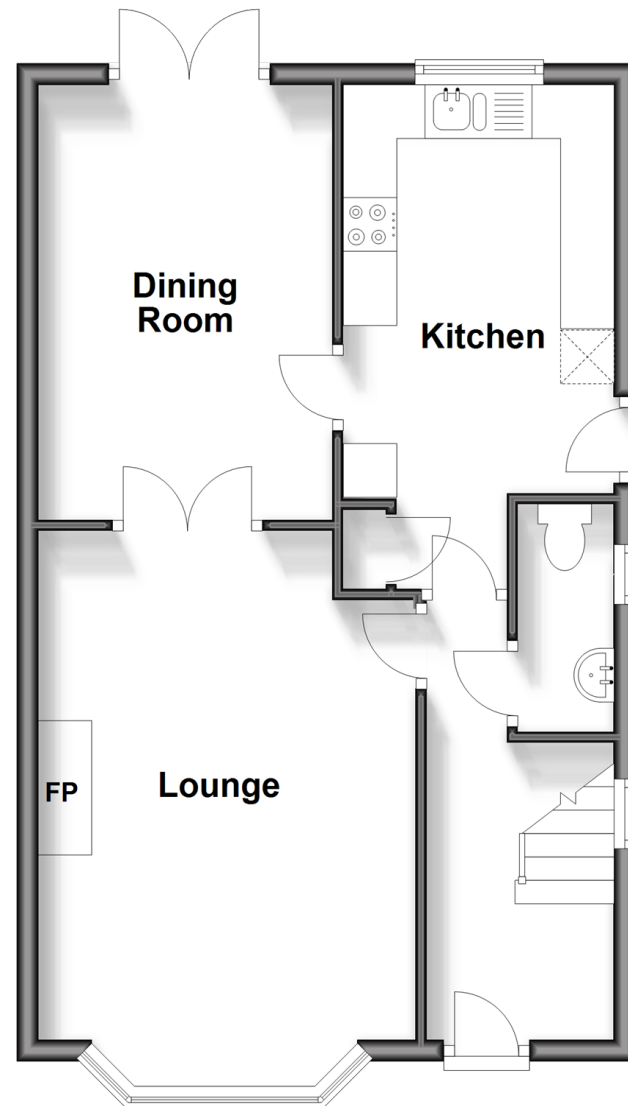
First Floor

Approx. 47.9 sq. metres (515.3 sq. feet)



Ground Floor

Approx. 48.2 sq. metres (519.2 sq. feet)



Accommodation

GROUND FLOOR

Hallway

Lounge: 17'1 x 11'9 (5.21m x 3.58m)

Cloakroom

Dining Room: 13'7 x 9'4 (4.14m x 2.85m)

Kitchen: 15'0 x 8'2 (4.58m x 2.49m)

FIRST FLOOR

Landing

Bedroom 1: 13'10 x 8'10 (4.22m x 2.69m)

En-Suite Shower Room

Bedroom 2: 12'4 x 8'8 (3.76m x 2.64m)

Bedroom 3: 9'11 x 9'8 at widest point (3.02m x 2.95m)

Bedroom 4: 9'3 x 7'9 (2.82m x 2.36m)

Bathroom: 7'7 x 6'9 (2.31m x 2.06m)

OUTSIDE

Front and Rear Gardens

Driveway

Double Garage



Main features

- Spacious 4 bedroom detached house with a versatile layout
- Low maintenance private rear garden
- Front drive and detached double garage
- Bedroom 1 comes complete with an en-suite shower room
- Quiet, tucked away, respectable location



Nearest Schools

Primary Schools: St Michael's C of E Primary (Tenterden) 0.2 miles, Tenterden C of E Junior School 1.0 miles, High Halden C of E Primary 1.7 miles

Secondary Schools: Homewood School and Sixth Form



Transport Information

Train Stations: Pluckley 5.7 miles, Appledore 6.3 miles, Headcorn 6.4 miles



Address

Henley Meadows, St. Michaels, Tenterden, Kent, TN30



Directions

For directions to this property please contact us.



Wards
Helping you move forwards

Call Tenterden Branch 01580 766002 ■ wardsofkent.co.uk



- Legal advice should be taken to verify fixtures/fittings, planning, alterations and/or lease details
- Appliances & services are untested, dimensions are approximate and floor plans are not to scale
- Through a Homewise Home For Life Plan people aged 60+ can secure this property for up to 59% less, by purchasing a Lifetime Lease.



14007554/20240422/AQ/AQ