



Price
£250,000

Freehold

3x  1x  2x 

**Lloyds Green,
Wittersham, Kent, TN30**

OVER 60?

Secure this property
for up to **59% less!**

Wards
Helping you move forwards



Main features

- **Spacious 3 bedroom semi-detached house**
- **Lounge and separate dining room**
- **Scope to improve/update**
- **Private rear garden**
- **Tucked away location in a sought after village**

Accommodation

GROUND FLOOR

Entrance Hall

Kitchen: 13'3 x 8'8 (4.04m x 2.64m)

Dining Room: 10'5 x 8'5 (3.18m x 2.57m)

Lounge: 15'0 x 11'8 (4.58m x 3.56m)

FIRST FLOOR

Landing

Bedroom 1: 15'0 x 8'6 (4.58m x 2.59m)

Bedroom 2: 12'2 x 11'7 (3.71m x 3.53m)

Bedroom 3: 9'9 x 7'7 (2.97m x 2.31m)

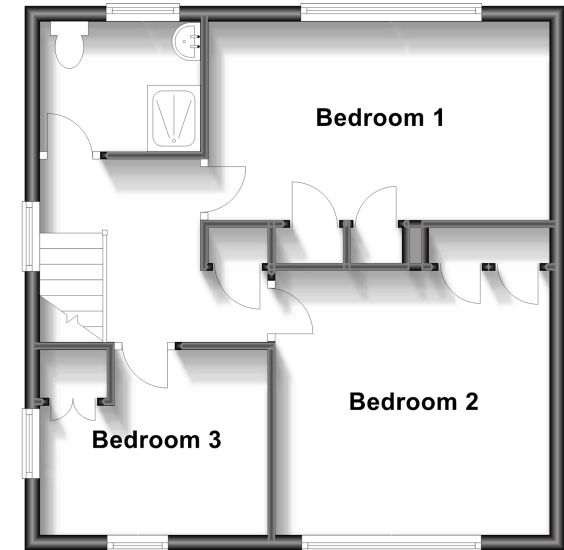
Shower Room: 6'11 x 6'7 (2.11m x 2.01m)

OUTSIDE

Rear Garden

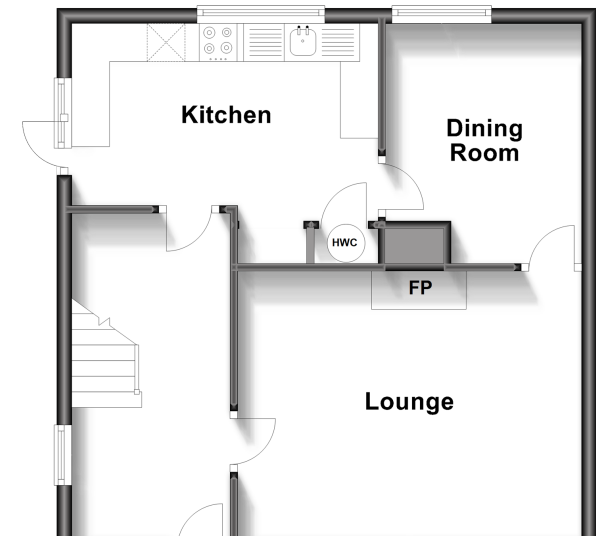
First Floor

Approx. 45.7 sq. metres (491.4 sq. feet)



Ground Floor

Approx. 45.5 sq. metres (489.8 sq. feet)



Call Tenterden - 01580 766002 ■ wardsofkent.co.uk

- Legal advice should be taken to verify fixtures/fittings, planning, alterations and/or lease details
- Appliances & services are untested, dimensions are approximate and floor plans are not to scale
- Through a Homewise Home For Life Plan people aged 60+ can secure this property for up to 59% less, by purchasing a Lifetime Lease.



14007558/20230719/NS/AQ