

**OVER 60?**

Secure this property  
for up to **59% less!**



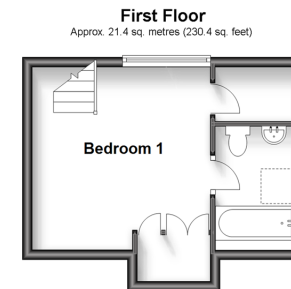
**Price**  
**£750,000**  
**Freehold**

5x  2x  1x 

Main Street, Beckley, Rye, East Sussex,  
TN31

*Wards*  
Helping you move forwards





## Accommodation

### GROUND FLOOR

Entrance Hall: 30'11 x 6'8 (9.43m x 2.03m)  
 Lounge: 23'11 x 14'8 (7.29m x 4.47m)  
 Kitchen/Diner: 14'3 x 11'7 (4.35m x 3.53m)  
 Conservatory Area: 14'3 x 11'7 (4.35m x 3.53m)  
 Boot/Utility Room: 14'5 x 4'9 (4.40m x 1.45m)

Bedroom 2: 14'8 x 11'0 (4.47m x 3.36m)  
 Bedroom 3: 14'1 x 9'7 (4.30m x 2.92m)  
 Bedroom 4: 11'5 x 10'3 (3.48m x 3.13m)  
 Bedroom 5: 9'5 x 6'1 (2.87m x 1.86m)  
 Bathroom: 9'10 x 5'6 (3.00m x 1.68m)

### FIRST FLOOR

Bedroom 1: 12'11 x 10'9 (3.94m x 3.28m)  
 En-Suite Bathroom: 8'6 x 5'5 (2.59m x 1.65m)

### OUTSIDE

Front and Rear Gardens  
 Garage and Driveway



## Main features

- **\*Offers Over £750,000\***
- **Stunning and spacious 5 bedroom chalet bungalow**
- **Set in the beautiful village of Beckley, nearby to local schools and amenities**
- **Immaculately presented throughout**
- **Open plan kitchen/diner leading out to a stunning secluded garden backing onto rural fields**



### Nearest Schools

Primary Schools: Beckley C of E Primary 0.0 miles, Northiam C of E Primary 1.3 miles, Peasmarch C of E Primary 2.5 miles

Secondary Schools: Frewen College 1.2 miles, Rye



### Transport Information

Train Stations: Appledore 8.4 miles, Ham Street 11. miles, Headcorn 12. miles



### Address

Main Street, Beckley, Rye, East Sussex, TN31



### Directions

For directions to this property please contact us.





Call Tenterden Branch 01580 766002 ■ [wardsofkent.co.uk](http://wardsofkent.co.uk)



- Legal advice should be taken to verify fixtures/fittings, planning, alterations and/or lease details
- Appliances & services are untested, dimensions are approximate and floor plans are not to scale
- Through a Homewise Home For Life Plan people aged 60+ can secure this property for up to 59% less, by purchasing a Lifetime Lease.



14007577/20230928/NS/LH