



Price
£700,000

Freehold

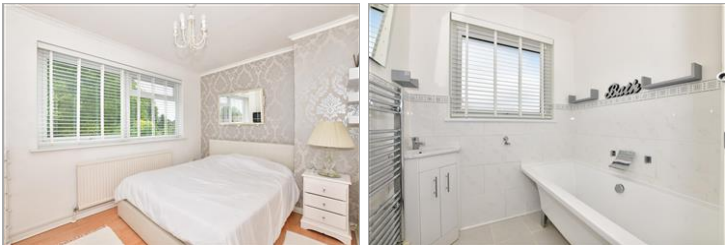
4x  2x  2x 

**Front Road,
Woodchurch, Ashford,
Kent, TN26**

OVER 60?

Secure this property
for up to **59% less!**

Wards
Helping you move forwards



Main features

- ***Offers Over £700,000***
- **Spacious 4 bedroom detached house**
- **Huge open lounge with sky lantern**
- **Integral annexe/office/5th bedroom**
- **Generous private rear garden and front drive with electric gates**
- **Fibreglass roofing on all flat roofs**
- **Development potential to build at the bottom of the garden**

Accommodation

GROUND FLOOR

Entrance Hall
 Cloakroom: 7'10 x 5'5 (2.39m x 1.65m)
 Kitchen/Diner: 21'1 x 10'9 (6.43m x 3.28m)
 Lounge: 22'1 x 21'4 (6.74m x 6.51m)
 Utility Room: 8'9 x 5'7 (2.67m x 1.70m)
 Annexe: 15'8 x 8'11 (4.78m x 2.72m)
 En-suite Shower Room: 7'6 x 5'5 (2.29m x 1.65m)

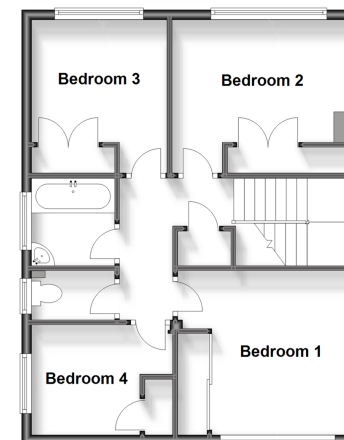
FIRST FLOOR

Landing
 Bedroom 1: 11'10 x 10'4 (3.61m x 3.15m)
 Bedroom 2: 11'4 x 11'0 (3.46m x 3.36m)
 Bedroom 3: 10'3 x 9'3 (3.13m x 2.82m)
 Bedroom 4: 9'6 x 7'5 (2.90m x 2.26m)
 Bathroom
 Separate Toilet

OUTSIDE

Driveway
 Front & Rear Gardens
 Electric Gates

First Floor
 Approx. 54.3 sq. metres (584.4 sq. feet)

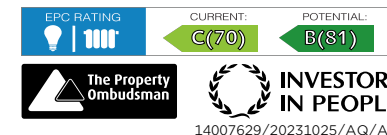


Ground Floor
 Approx. 104.4 sq. metres (1124.2 sq. feet)



Call Tenterden - 01580 766002 ■ wardsofkent.co.uk

- Legal advice should be taken to verify fixtures/fittings, planning, alterations and/or lease details
- Appliances & services are untested, dimensions are approximate and floor plans are not to scale
- Through a Homewise Home For Life Plan people aged 60+ can secure this property for up to 59% less, by purchasing a Lifetime Lease.



14007629/20231025/AQ/AQ