



Price
£350,000

Freehold

3x  1x  2x 

**The Beeches, Leslie
Crescent, Tenterden,
Kent, TN30**

OVER 60?

Secure this property
for up to **59% less!**

Wards
Helping you move forwards

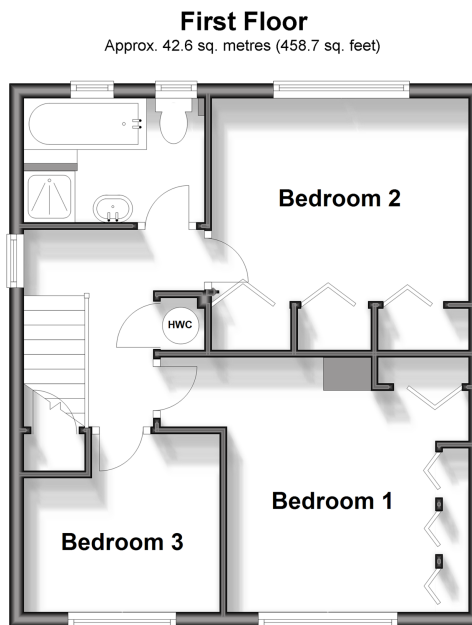
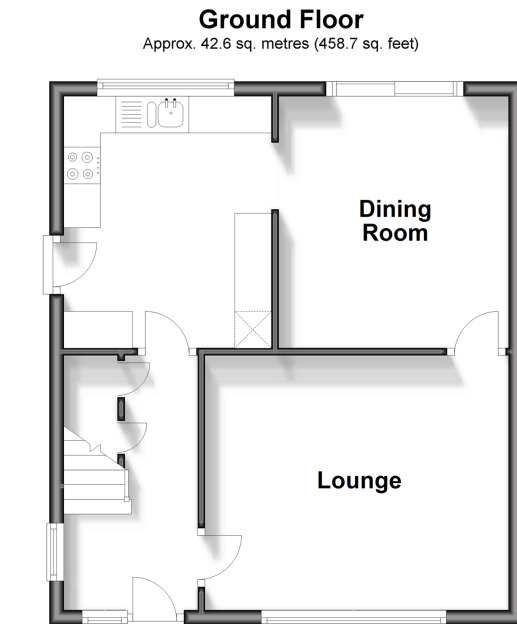


Main features

- Great 3 bedroom semi-detached house
- Loads of potential to improve with a little updating
- Gardens both front and rear
- Garage and off road parking
- Convenient location close to both shops and schools

Call Tenterden - 01580 766002 ■ wardsofkent.co.uk

- Legal advice should be taken to verify fixtures/fittings, planning, alterations and/or lease details
- Through a Homewise Home For Life Plan people aged 60+ can secure this property for up to 59% less, by purchasing a Lifetime Lease.



Accommodation

GROUND FLOOR

Hallway

Lounge: 13'9 x 11'5 (4.19m x 3.48m)

Kitchen: 11'2 x 9'3 (3.41m x 2.82m)

Dining Room: 11'2 x 10'4 (3.41m x 3.15m)

FIRST FLOOR

Landing

Bathroom: 8'1 x 5'9 (2.47m x 1.75m)

Bedroom 1: 11'5 x 10'9 (3.48m x 3.28m)

Bedroom 2: 11'5 x 9'1 (3.48m x 2.77m)

Bedroom 3: 9'2 x 7'11 (2.80m x 2.41m)

OUTSIDE

Front and Rear Gardens

Driveway

Garage