



**Price**  
**£475,000**

**Freehold**

4x  2x  2x 

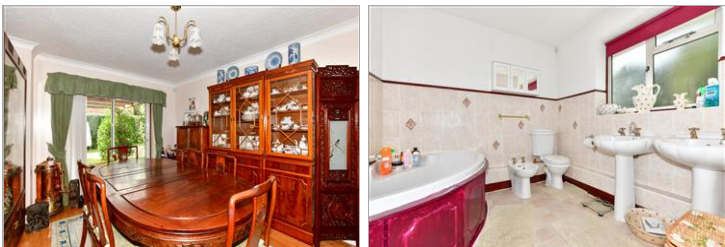
**Grange Crescent, St  
Michaels, Tenterden,  
Kent, TN30**

**OVER 60?**

Secure this property  
for up to **59% less!**

*Wards*  
Helping you move forwards





## Main features

- Offers Over £475,000
- Spacious 4 bedroom detached family home
- Good sized lounge and separate dining room
- Bright airy conservatory
- Private rear garden
- Garage and long drive for multiple vehicles

## Accommodation

### GROUND FLOOR

Porch  
Hallway  
Lounge: 20'6 x 11'9 (6.25m x 3.58m)  
Conservatory: 10'3 x 9'10 (3.13m x 3.00m)  
Dining Room: 13'11 x 11'2 (4.24m x 3.41m)  
Kitchen: 15'11 at widest point x 14'4 (4.85m x 4.37m)  
Shower Room: 8'10 x 8'3 (2.69m x 2.52m)

### FIRST FLOOR

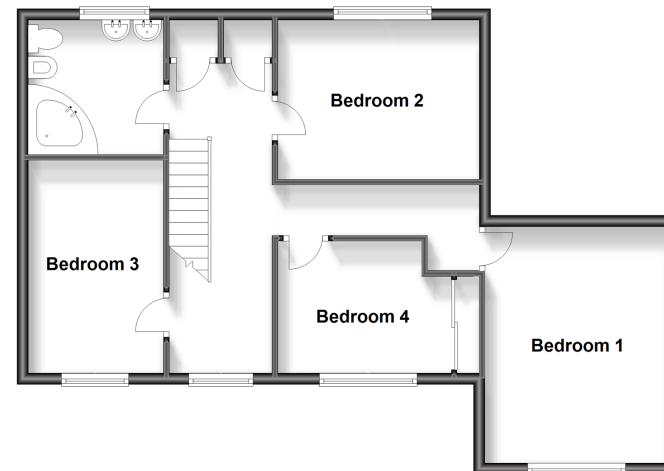
Landing  
Bedroom 1: 13'10 x 10'9 (4.22m x 3.28m)  
Bedroom 2: 11'9 x 9'8 (3.58m x 2.95m)  
Bedroom 3: 12'5 x 8'3 (3.79m x 2.52m)  
Bedroom 4: 12'1 x 7'10 (3.69m x 2.39m)  
Bathroom: 8'4 x 7'11 (2.54m x 2.41m)

### OUTSIDE

Front and Rear Gardens  
Driveway  
Garage

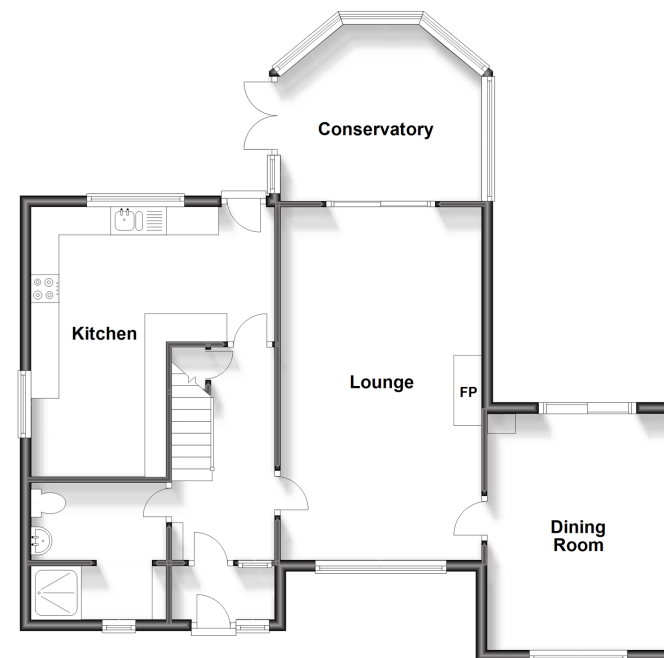
### First Floor

Approx. 64.9 sq. metres (698.6 sq. feet)



### Ground Floor

Approx. 80.2 sq. metres (863.5 sq. feet)



**Call Tenterden - 01580 766002 ■ [wardsofkent.co.uk](http://wardsofkent.co.uk)**

- Legal advice should be taken to verify fixtures/fittings, planning, alterations and/or lease details
- Appliances & services are untested, dimensions are approximate and floor plans are not to scale
- Through a Homewise Home For Life Plan people aged 60+ can secure this property for up to 59% less, by purchasing a Lifetime Lease.



14007671/20240129/NS/AQ