

**OVER 60?**

Secure this property  
for up to **59% less!**



**Price**

**£925,000**

**Freehold**

5x  2x  3x 

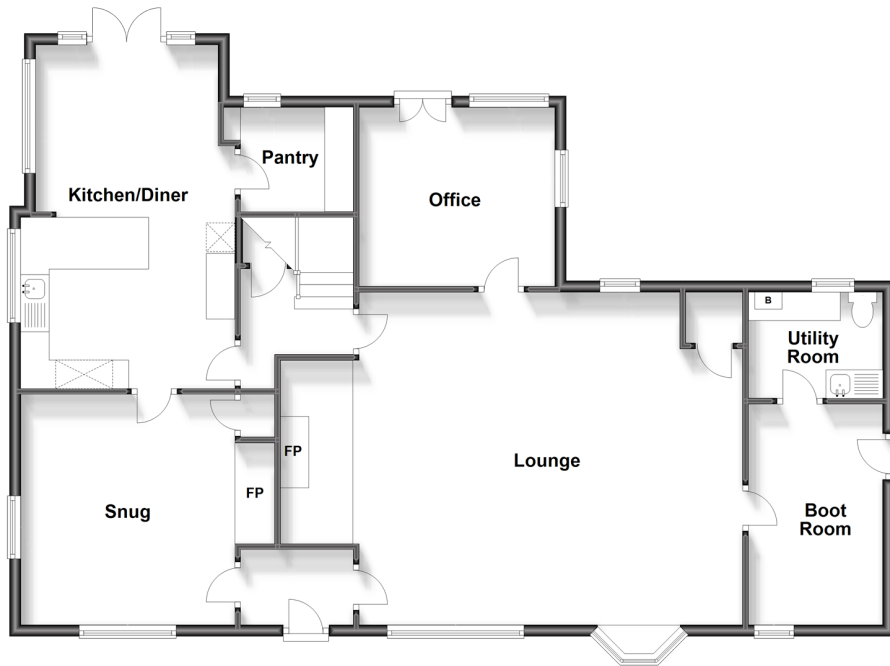
Ashford Road, High Halden, Ashford, Kent,  
TN26

*Wards*  
Helping you move forwards



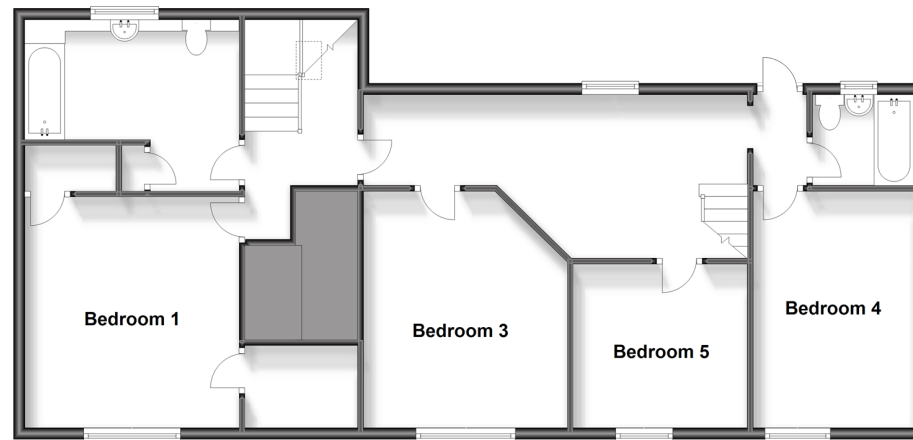
### Ground Floor

Approx. 121.8 sq. metres (1310.7 sq. feet)



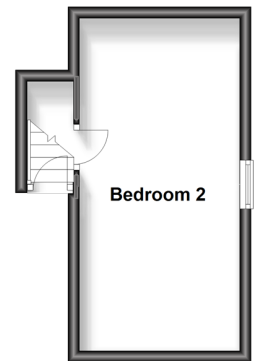
### Split Level First Floor

Approx. 98.6 sq. metres (1061.4 sq. feet)



### Second Floor

Approx. 18.0 sq. metres (194.2 sq. feet)



## Accommodation

### GROUND FLOOR

Front Porch

Utility Room: 7'9 x 6'3 (2.36m x 1.91m)

Boot Room: 12'8 x 7'7 (3.86m x 2.31m)

Lounge: 25'4 x 19'4 (7.73m x 5.90m)

Office: 11'5 x 9'7 (3.48m x 2.92m)

Inner Hall

Kitchen/Diner: 19'7 x 12'3 (5.97m x 3.74m)

Pantry

Snug: 14'8 x 13'3 (4.47m x 4.04m)

### SPLIT LEVEL FIRST FLOOR

Landing

Bathroom 1: 12'2 x 9'9 (3.71m x 2.97m)

Bedroom 1: 13'4 x 12'2 (4.07m x 3.71m)

Bedroom 3: 13'1 x 12'5 (3.99m x 3.79m)

Bedroom 4: 13'10 x 9'6 (4.22m x 2.90m)

Bedroom 5: 9'9 x 9'9 (2.97m x 2.97m)

Bathroom 2: 5'9 x 5'4 (1.75m x 1.63m)

2nd Landing/Office

### SECOND FLOOR

Bedroom 2: 17'1 x 9'1 (5.21m x 2.77m)

### OUTSIDE

Wrap Around Garden

Double Garage/Workshop



## Main features

- **\*Offers Over £925,000\***
- **Stunning 15th century Grade II listed 5 bedroom detached house**
- **Character features to include the inglenook fireplace, large oak beams to name but a few**
- **Extended kitchen/diner**
- **Generous wrap around garden with potential for development, subject to planning**



### Nearest Schools

Primary Schools: High Halden C of E Primary 0.5 miles, St Michael's C of E Primary (Tenterden) 1.5 miles, Bethersden Primary 3.0 miles

Secondary Schools: Homewood School and Sixth Form



### Transport Information

Train Stations: Pluckley 5.7 miles, Ham Street 6.9 miles, Headcorn 7.8 miles



### Address

Ashford Road, High Halden, Ashford, Kent, TN26



### Directions

For directions to this property please contact us.





Call Tenterden Branch 01580 766002 ■ [wardsofkent.co.uk](https://wardsofkent.co.uk)



■ If buying to let, the energy rating will need to be improved to at least 'E' rating before you can let the property  
■ Appliances & services are untested, dimensions are approximate and floor plans are not to scale

■ Legal advice should be taken to verify fixtures/fittings, planning, alterations and/or lease details  
■ Through a Homewise Home For Life Plan people aged 60+ can secure this property for up to 59% less, by purchasing a Lifetime Lease.

14007673/20231127/NS/AQ