



Price
£375,000

Leasehold

2x  2x  1x 

**Parkside Court,
Smallhythe Road,
Tenterden, Kent, TN30**

Wards
Helping you move forwards



Main features

- 1 or 2 bedroom, 2 storey terraced retirement house
- Adaptable layout (ground floor 2nd bedroom or dining room)
- En-suite shower room to bedroom 1 and downstairs shower room
- Rear garden and communal gardens
- Allocated parking within the car port
- For residents 60 years and above

Accommodation

GROUND FLOOR

Hallway
 Shower Room: 7'1 x 6'5 (2.16m x 1.96m)
 Dining Room/Bedroom 2: 11'6 x 11'3 (3.51m x 3.43m)
 Lounge: 14'11 x 10'9 (4.55m x 3.28m)
 Kitchen: 13'0 x 6'10 (3.97m x 2.08m)

FIRST FLOOR

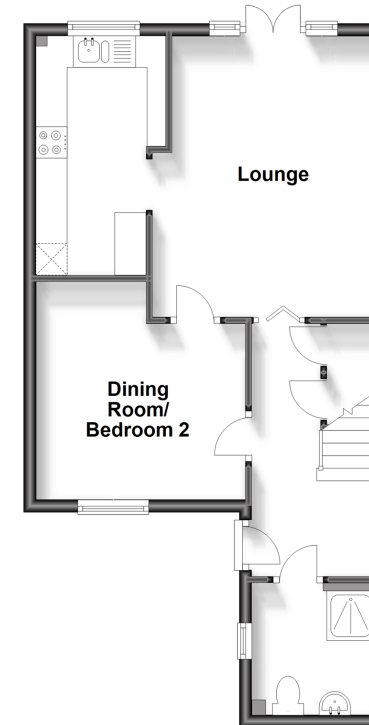
Landing
 Bedroom 1: 14'9 x 11'1 (4.50m x 3.38m)
 Dressing Room: 11'1 x 5'10 (3.38m x 1.78m)
 En-Suite Shower Room: 8'4 x 6'6 (2.54m x 1.98m)
 Storage/Office: 11'2 x 5'10 (3.41m x 1.78m)

OUTSIDE

Car Port
 Front and Rear Gardens
 Communal Gardens

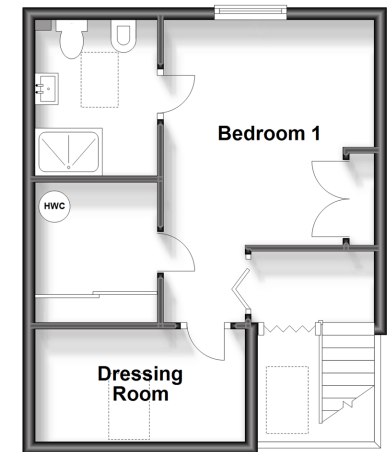
Ground Floor

Approx. 46.7 sq. metres (502.9 sq. feet)



First Floor

Approx. 32.6 sq. metres (351.1 sq. feet)



Call Tenterden - 01580 766002 ■ wardsofkent.co.uk

- Legal advice should be taken to verify fixtures/fittings, planning, alterations and/or lease details
- Appliances & services are untested, dimensions are approximate and floor plans are not to scale



14007681/20240123/NS/AQ