

OVER 60?

Secure this property
for up to **59% less!**



Price

£760,000

Freehold

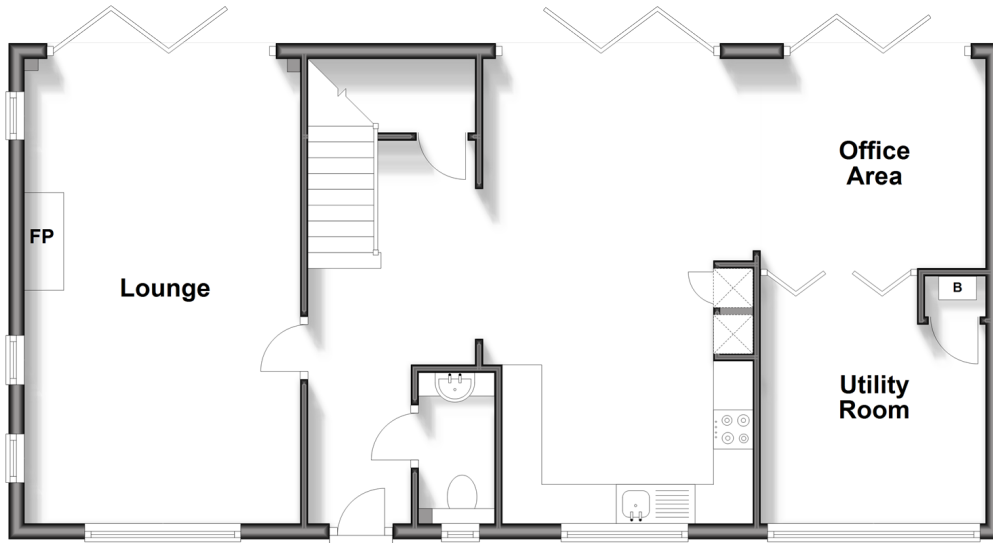
3x  2x  1x 

Vere Meadows, Benenden, Cranbrook,
Kent, TN17

Wards
Helping you move forwards

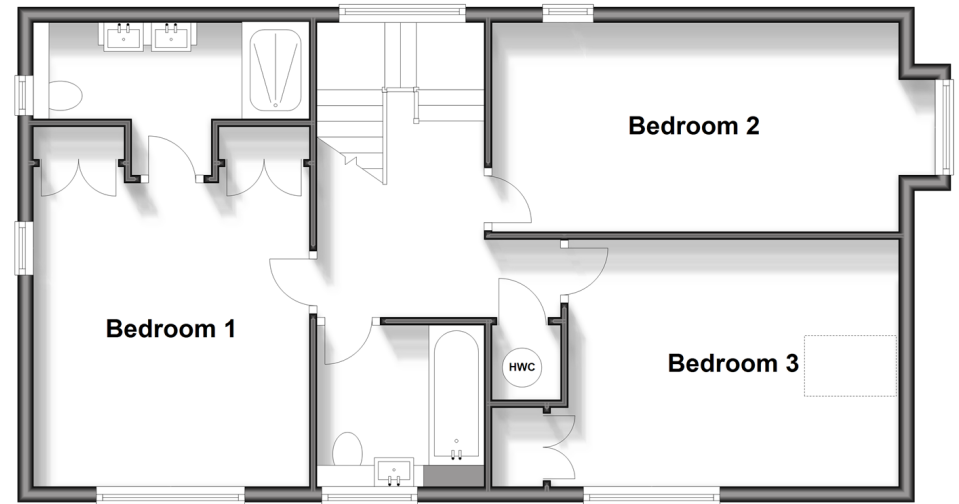
Ground Floor

Approx. 72.5 sq. metres (780.1 sq. feet)



First Floor

Approx. 65.8 sq. metres (708.3 sq. feet)



Accommodation

GROUND FLOOR

Hallway
Cloakroom
Lounge: 19'5 x 12'0 (5.92m x 3.66m)
Kitchen/Diner: 19'8 x 11'9 (6.00m x 3.58m)

Office Area: 9'11 x 8'9 (3.02m x 2.67m)
Utility Room: 10'5 x 8'10 (3.18m x 2.69m)

FIRST FLOOR

Landing
Bedroom 1: 13'0 x 11'10 (3.97m x 3.61m)
En-Suite Shower Room
Bedroom 2: 18'7 x 8'10 (5.67m x 2.69m)
Bedroom 3: 13'3 x 10'11 (4.04m x 3.33m)
Bathroom

OUTSIDE

Front and Rear Gardens
Driveway



Main features

- Stunning detached 3 bedroom modern family home
- Open plan kitchen/diner
- Converted garage creating a versatile room
- Light bright and airy lounge
- Private low maintenance rear garden
- Highly sought after village location
- 7 years still remain on the NHBC warranty



Nearest Schools

Primary Schools: Benenden C of E Primary 0.2 miles, Rolvenden Primary 2.3 miles, Sissinghurst Voluntary Aided C of E Primary 2.9 miles

Secondary Schools: Benenden School 0.7 miles,



Transport Information

Train Stations: Headcorn 7.0 miles, Pluckley 9.4 miles, Appledore 10. miles



Address

Vere Meadows, Benenden, Cranbrook, Kent, TN17



Directions

For directions to this property please contact us.



Wards
Helping you move forwards

Call Tenterden Branch 01580 766002 ■ wardsofkent.co.uk



■ Legal advice should be taken to verify fixtures/fittings, planning, alterations and/or lease details ■ Appliances & services are untested, dimensions are approximate and floor plans are not to scale
■ Through a Homewise Home For Life Plan people aged 60+ can secure this property for up to 59% less, by purchasing a Lifetime Lease.



14007697/20231121/NS/AQ