

OVER 60?

Secure this property
for up to **59% less!**



Price

£210,000

Leasehold

1x  1x  1x 

Griffin Court, Vidler Square, Rye, East
Sussex, TN31

Wards
Helping you move forwards



Main features

- Allocated parking space
- Communal gardens
- Generous open plan lounge/diner
- Short walk to the picturesque town of Rye
- Situated in the Valley Park development

Accommodation

FIRST FLOOR

Hallway

Lounge/Diner: 19'9 x 11'1 (6.02m x 3.38m)

Kitchen: 10'9 x 8'8 (3.28m x 2.64m)

Bathroom: 7'7 x 5'7 (2.31m x 1.70m)

Bedroom : 11'1 at widest point x 10'11 at widest point (3.38m x 3.33m)

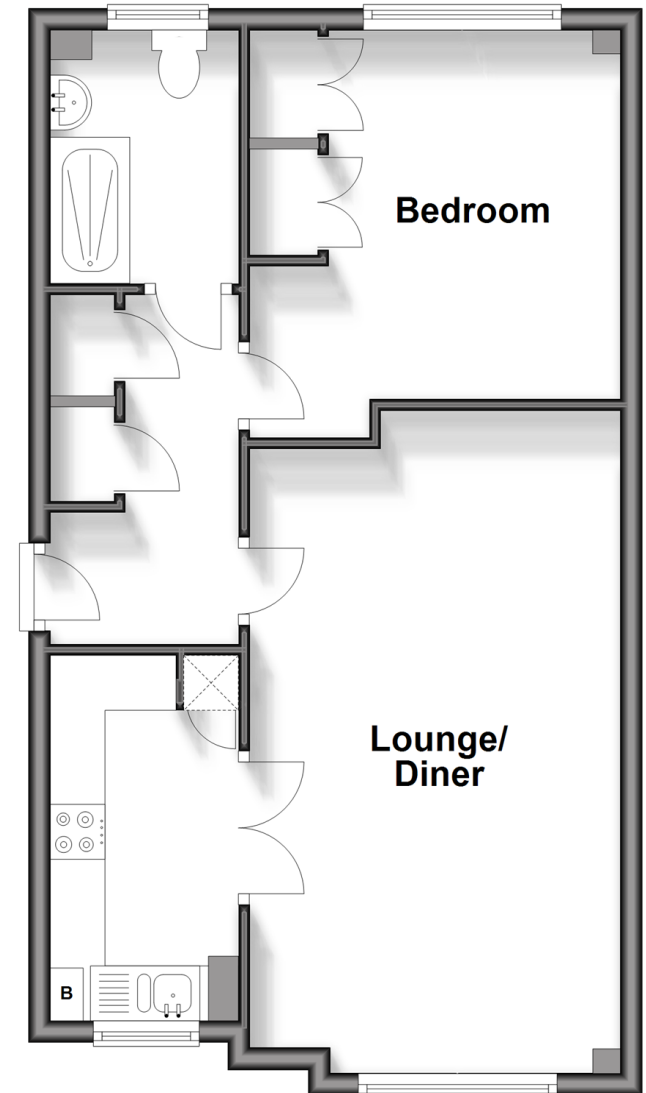
OUTSIDE

Allocated Parking Space

Communal Gardens

First Floor

Approx. 48.5 sq. metres (522.0 sq. feet)



Call Tenterden - 01580 766002 ■ wardsofkent.co.uk

- Legal advice should be taken to verify fixtures/fittings, planning, alterations and/or lease details
- Appliances & services are untested, dimensions are approximate and floor plans are not to scale
- Through a Homewise Home For Life Plan people aged 60+ can secure this property for up to 59% less, by purchasing a Lifetime Lease.