

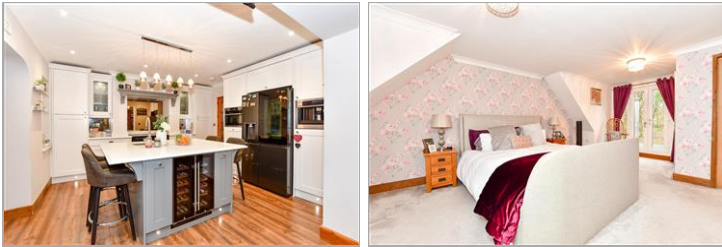


Price
£850,000
Freehold

4x  2x  3x 

Kenardington, Ashford, Kent, TN26

Wards
Helping you move forwards



Main features

- Extended chalet bungalow creating a comfortable spacious family home
- Sociable open plan kitchen/diner
- Cinema room and lounge allowing flexibility in the layout
- Double garage with an office above
- Generously proportioned garden with lawn, patio and raised decking area to include a swimming pool

Accommodation

GROUND FLOOR

Hallway
 Kitchen: 14'0 x 12'11 (4.27m x 3.94m)
 Utility Room: 10'7 x 9'8 (3.23m x 2.95m)
 Dining Area: 16'2 x 12'7 (4.93m x 3.84m)
 Lounge: 18'7 x 13'0 (5.67m x 3.97m)
 Bathroom: 7'11 x 6'0 (2.41m x 1.83m)
 Bedroom 4: 11'9 x 11'0 (3.58m x 3.36m)
 Family Room: 13'11 x 13'8 (4.24m x 4.17m)

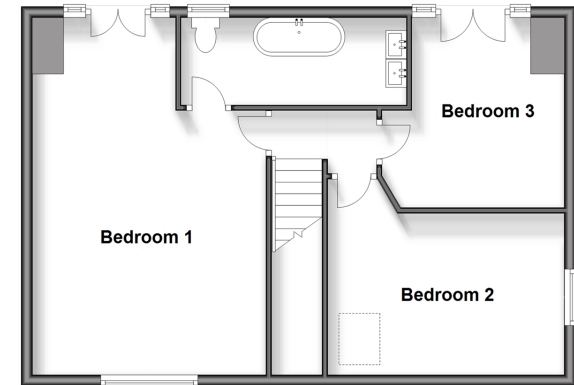
FIRST FLOOR

Landing
 Bedroom 1: 21'4 x 14'4 (6.51m x 4.37m)
 En-Suite Jack and Jill: 13'3 x 5'0 (4.04m x 1.53m)
 Bedroom 2: 14'4 x 10'1 (4.37m x 3.08m)
 Bedroom 3: 11'1 x 11'1 (3.38m x 3.38m)

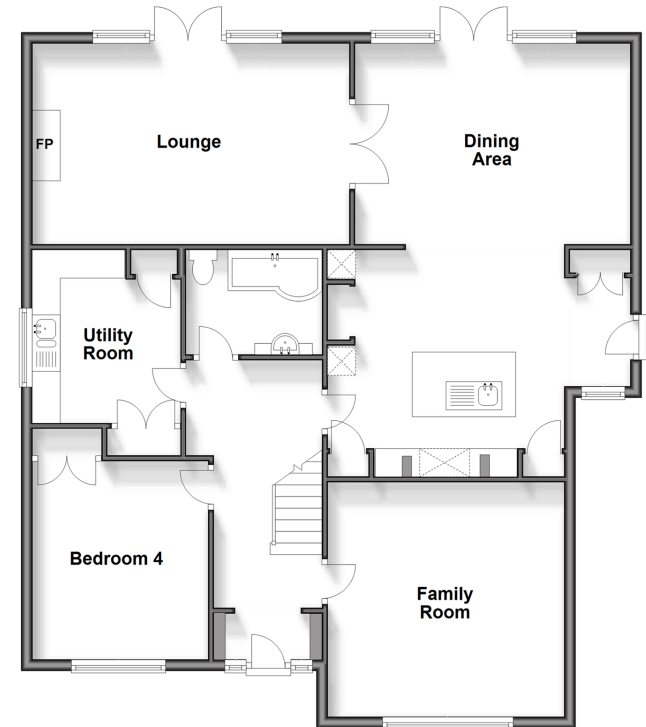
OUTSIDE

Double Garage
 Front and Rear Gardens

First Floor
 Approx. 60.3 sq. metres (648.8 sq. feet)

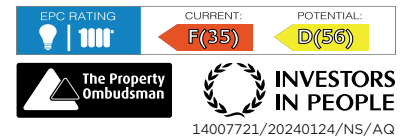


Ground Floor
 Approx. 115.4 sq. metres (1242.2 sq. feet)



Call Tenterden - 01580 766002 ■ wardsofkent.co.uk

- If buying to let, the energy rating will need to be improved to at least 'E' rating before you can let the property
- Legal advice should be taken to verify fixtures/fittings, planning, alterations and/or lease details
- Appliances & services are untested, dimensions are approximate and floor plans are not to scale



14007721/20240124/NS/AQ