



**Price**

**£650,000**

**Freehold**

4x  3x  1x 

**Turners Avenue,  
Tenterden, Kent, TN30**

**OVER 60?**

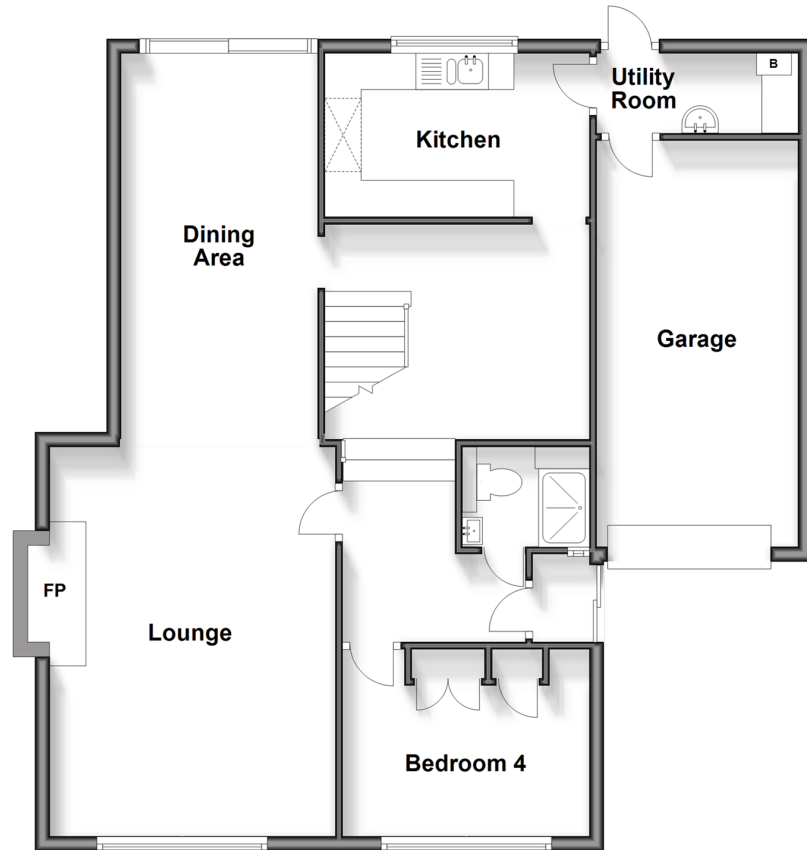
Secure this property  
for up to **59% less!**

*Wards*  
Helping you move forwards



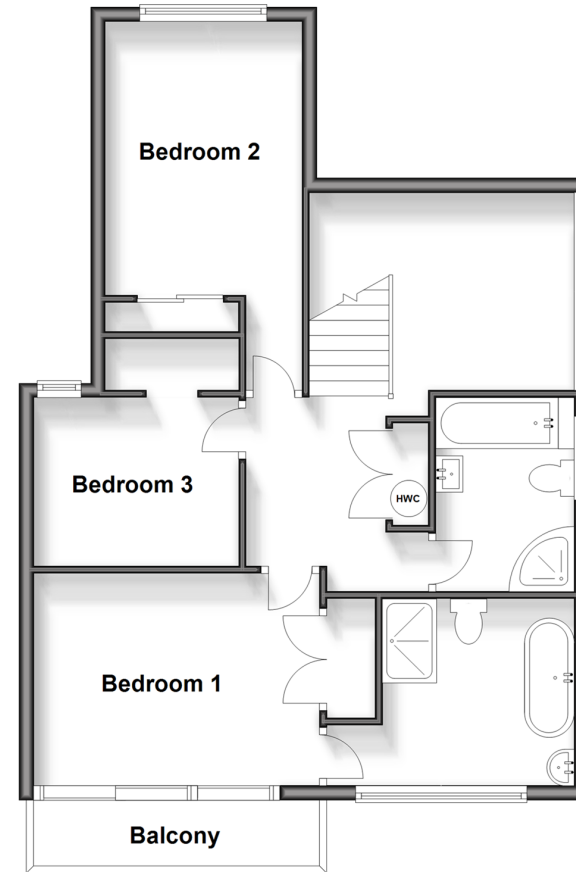
### Split Level Ground Floor

Approx. 94.2 sq. metres (1014.2 sq. feet)



### First Floor

Approx. 64.2 sq. metres (690.7 sq. feet)



## Accommodation

### SPLIT LEVEL GROUND FLOOR

Entrance Hall

Dining Area: 15'9 x 9'3 (4.80m x 2.82m)

Lounge: 18'3 x 12'8 (5.57m x 3.86m)

Bedroom 4: 11'11 x 8'5 (3.63m x 2.57m)

Shower Room

Kitchen: 12'0 x 7'9 (3.66m x 2.36m)

Inner Hall/Breakfast Area

Utility Room

### FIRST FLOOR

Landing

Bedroom 1: 13'0 x 9'7 (3.97m x 2.92m)

En-Suite Shower Room: 11'9 x 8'6  
(3.58m x 2.59m)

Bedroom 2: 9'9 x 7'10 (2.97m x 2.39m)

Bedroom 3: 12'9 x 9'0 (3.89m x 2.75m)

Bathroom: 8'10 x 6'6 (2.69m x 1.98m)

### OUTSIDE

Front and Rear Gardens

Driveway

Garage

Balcony



## Main features

- 4 bedroom detached family home
- Bedroom 1 complete with luxury en-suite and balcony
- Flexible layout to suit multiple generations
- Private well sized rear garden
- Recently replaced double glazing throughout in 2019
- Chain free in a desirable location



### Nearest Schools

Primary Schools: Tenterden C of E Junior School 0.5 miles, St Michael's C of E Primary (Tenterden) 1.1 miles, High Halden C of E Primary 3.1 miles

Secondary Schools: Homewood School and Sixth Form



### Transport Information

Train Stations: Headcorn 7.0 miles, Ham Street 7.1 miles, Appledore 7.4 miles



### Address

Turners Avenue, Tenterden, Kent, TN30



### Directions

For directions to this property please contact us.





Call Tenterden Branch 01580 766002 ■ [wardsofkent.co.uk](http://wardsofkent.co.uk)



- Legal advice should be taken to verify fixtures/fittings, planning, alterations and/or lease details
- Appliances & services are untested, dimensions are approximate and floor plans are not to scale
- Through a Homewise Home For Life Plan people aged 60+ can secure this property for up to 59% less, by purchasing a Lifetime Lease.



14007726/20240320/NS/AQ