



Price

£400,000

Freehold

3x  2x  1x 

The Lindens, St. Benet's Way, Tenterden,  
Kent, TN30

*Wards*  
Helping you move forwards





## Main features

- Lovely family home in a popular area
- Benefits from a downstairs cloakroom, en-suite shower room and family bathroom
- Allocated parking space and garage
- Walking distance to local schools, shops and other amenities
- Private rear garden

## Accommodation

### GROUND FLOOR

Entrance Hall

Cloakroom

Lounge: 16'4 x 10'1 (4.98m x 3.08m)

Kitchen/Diner: 18'5 x 9'10 (5.62m x 3.00m)

### FIRST FLOOR

Landing

Bedroom 1 : 11'1 x 10'8 (3.38m x 3.25m)

En-suite Shower Room

Bedroom 2 : 12'4 x 7'11 (3.76m x 2.41m)

Bedroom 3 : 9'1 x 8'3 (2.77m x 2.52m)

Bathroom: 7'0 x 6'6 (2.14m x 1.98m)

### OUTSIDE

Front Garden

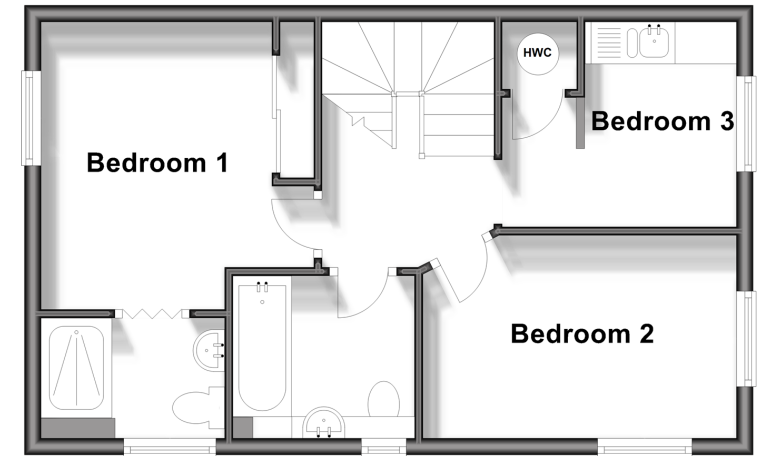
Rear Garden

Allocated Parking Space

Garage

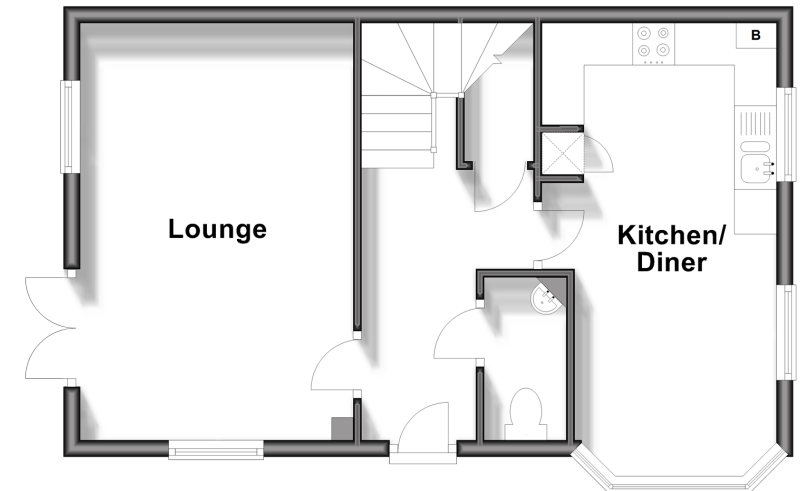
## First Floor

Approx. 41.2 sq. metres (443.5 sq. feet)



## Ground Floor

Approx. 39.6 sq. metres (426.1 sq. feet)



**Call Tenterden - 01580 766002 ■ [wardsofkent.co.uk](http://wardsofkent.co.uk)**

- Legal advice should be taken to verify fixtures/fittings, planning, alterations and/or lease details
- Appliances & services are untested, dimensions are approximate and floor plans are not to scale



14007740/20240330/AQ/AQ