



OVER 60?

Secure this property
for up to **59% less!**

Price

£230,000

Leasehold

2x  1x  1x 

**Shrubcote, Tenterden,
Kent, TN30**

Wards
Helping you move forwards



Main features

- **Spacious 2 bedroom first floor maisonette**
- **Recently updated kitchen**
- **Ideal first time buy or buy to let**
- **Generous private garden**
- **Great location within easy reach of Tenterden Town Centre**

Accommodation

FIRST FLOOR

Landing

Bedroom 1: 14'0 x 10'1 (4.27m x 3.08m)

Lounge: 13'9 x 11'11 (4.19m x 3.63m)

Kitchen: 12'2 x 6'11 (3.71m x 2.11m)

Bedroom 2: 11'9 x 10'5 (3.58m x 3.18m)

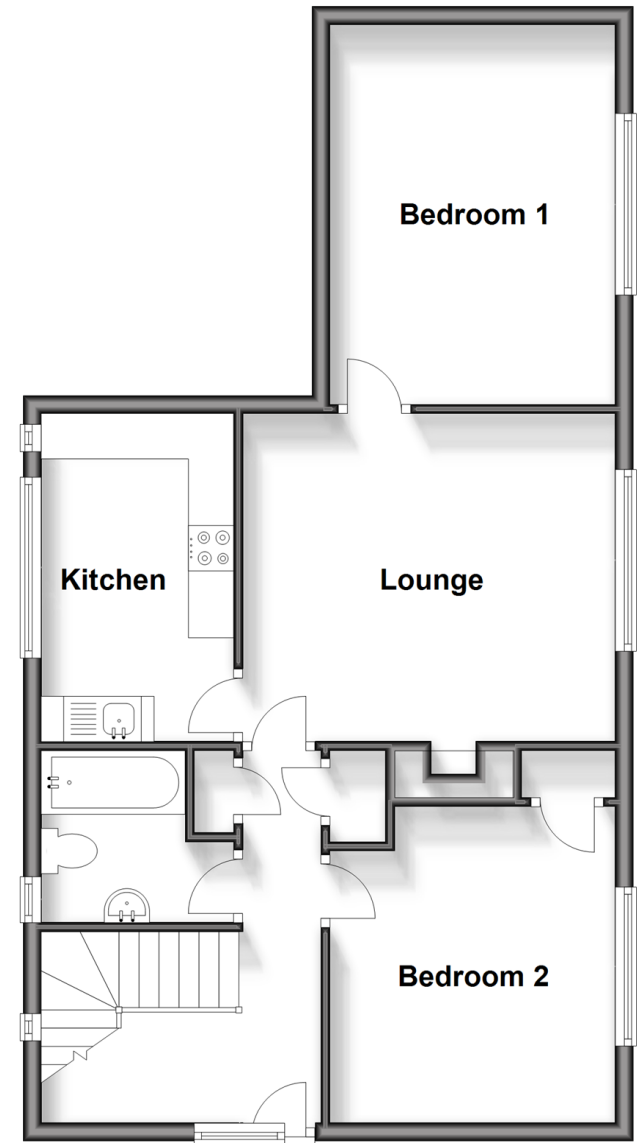
Bathroom

OUTSIDE

Rear Garden

First Floor

Approx. 63.2 sq. metres (680.0 sq. feet)



Call Tenterden - 01580 766002 ■ wardsofkent.co.uk

- Legal advice should be taken to verify fixtures/fittings, planning, alterations and/or lease details
- Appliances & services are untested, dimensions are approximate and floor plans are not to scale
- Through a Homewise Home For Life Plan people aged 60+ can secure this property for up to 59% less, by purchasing a Lifetime Lease.



14007775/20240319/NS/AQ