

**OVER 60?**

Secure this property  
for up to **59% less!**



**Price**  
**£410,000**  
**Freehold**

3x  1x  1x 

Henley View, Ashford Road, St. Michaels,  
Tenterden, Kent, TN30

*Wards*  
Helping you move forwards





## Main features

- Beautiful 3 bedroom semi-detached house
- Open plan lounge and dining areas
- Recently modernised bathroom
- Generous sunny rear garden
- Garage and off road parking

## Accommodation

### GROUND FLOOR

Hallway

Dining Area: 12'0 x 8'9 (3.66m x 2.67m)

Kitchen: 11'3 x 7'6 (3.43m x 2.29m)

Utility: 8'11 x 5'5 (2.72m x 1.65m)

Lounge: 10'10 x 9'11 (3.30m x 3.02m)

Snug: 8'11 x 8'7 (2.72m x 2.62m)

Toilet

### FIRST FLOOR

Landing

Bedroom 1: 10'8 x 10'3 (3.25m x 3.13m)

Bedroom 2: 10'3 x 8'10 (3.13m x 2.69m)

Bedroom 3: 6'9 x 6'9 (2.06m x 2.06m)

Bathroom: 6'8 x 5'8 (2.03m x 1.73m)

### OUTSIDE

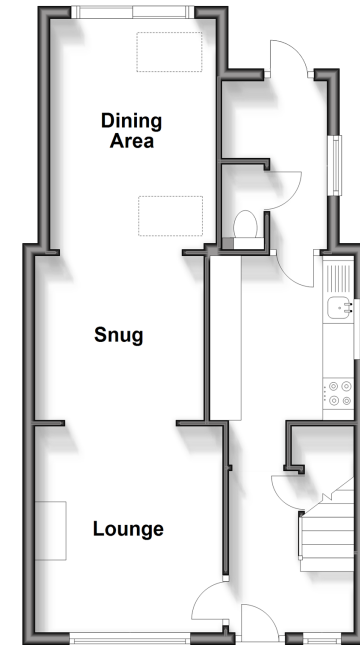
Front and Rear Gardens

Garage

Driveway

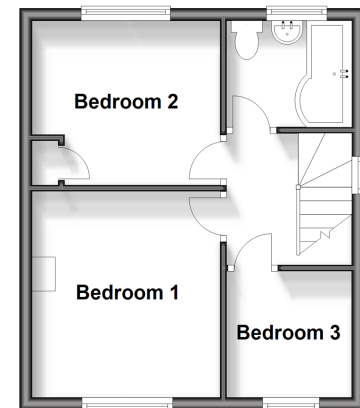
### Ground Floor

Approx. 45.8 sq. metres (493.2 sq. feet)



### First Floor

Approx. 30.8 sq. metres (331.2 sq. feet)



**Call Tenterden - 01580 766002 ■ [wardsofkent.co.uk](http://wardsofkent.co.uk)**

- Legal advice should be taken to verify fixtures/fittings, planning, alterations and/or lease details
- Appliances & services are untested, dimensions are approximate and floor plans are not to scale
- Through a Homewise Home For Life Plan people aged 60+ can secure this property for up to 59% less, by purchasing a Lifetime Lease.



14007798/20240328/AQ/AQ