



Price
£525,000

Freehold

4x  2x  1x 

**Maids Close, Biddenden,
Ashford, Kent, TN27**

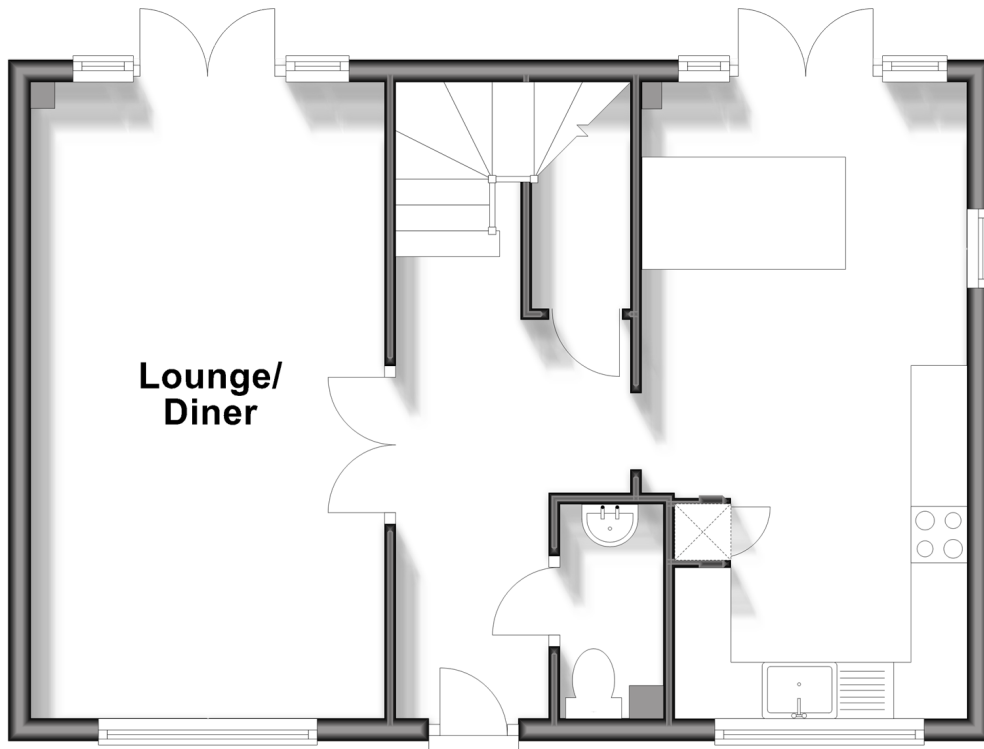
OVER 60?

Secure this property
for up to **59% less!**

Wards
Helping you move forwards

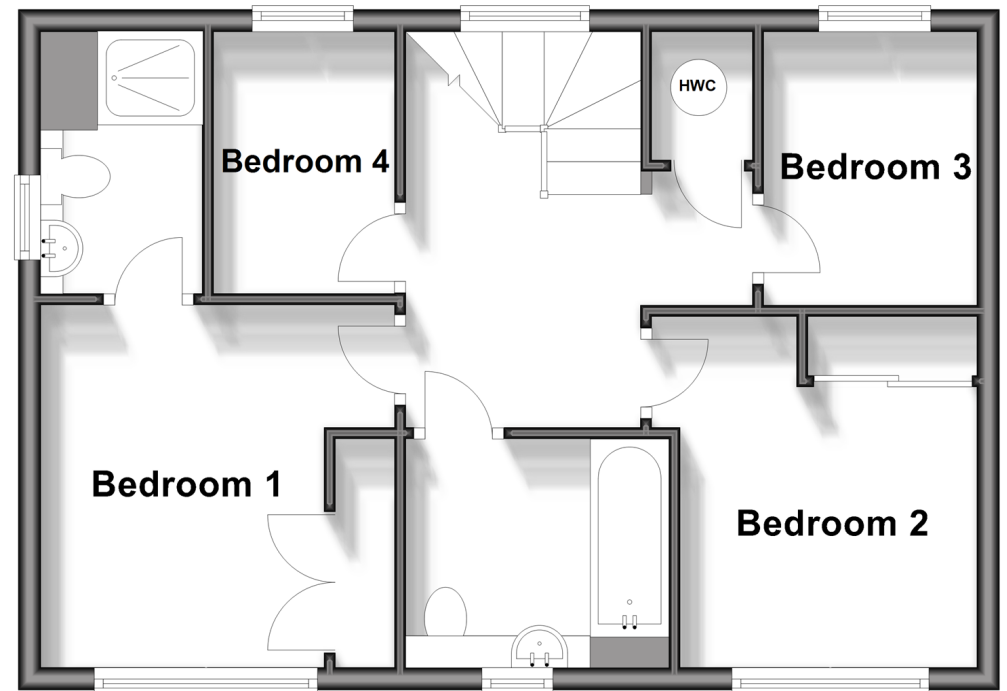
Ground Floor

Approx. 47.0 sq. metres (506.2 sq. feet)



First Floor

Approx. 47.0 sq. metres (506.2 sq. feet)



Accommodation

GROUND FLOOR

Hallway

Lounge/Diner: 18'6 x 10'3 (5.64m x 3.13m)

Kitchen: 18'7 x 9'10 (5.67m x 3.00m)

Cloakroom

FIRST FLOOR

Landing

Bedroom 1: 10'7 x 10'6 (3.23m x 3.20m)

En-Suite Shower Room: 8'0 x 4'11 (2.44m x 1.50m)

Bedroom 2: 9'9 x 9'7 (2.97m x 2.92m)

Bedroom 3: 8'9 x 6'5 (2.67m x 1.96m)

Bedroom 4: 7'8 x 5'8 (2.34m x 1.73m)

Bathroom: 7'8 x 6'6 (2.34m x 1.98m)

OUTSIDE

Front and Rear Gardens

Driveway

Open Barn



Main features

- Stunning 4 bedroom detached modern home
- Brand new state of the art kitchen
- Beautifully landscaped rear garden with open barn feature
- Bedroom 1 with en-suite shower facilities
- Desirable village location



Nearest Schools

Primary Schools: John Mayne C of E Primary, Biddenden 0.3 miles, Frittenden C of E Primary 2.4 miles, St Michael's C of E Primary (Tenterden) 3.1 miles

Secondary Schools: Homewood School and Sixth Form



Transport Information

Train Stations: Headcorn 3.4 miles, Pluckley 5.5 miles, Appledore 9.6 miles



Address

Maids Close, Biddenden, Ashford, Kent, TN27



Directions

For directions to this property please contact us.



Wards
Helping you move forwards

Call Tenterden Branch 01580 766002 ■ wardsofkent.co.uk



■ Legal advice should be taken to verify fixtures/fittings, planning, alterations and/or lease details ■ Appliances & services are untested, dimensions are approximate and floor plans are not to scale
■ Through a Homewise Home For Life Plan people aged 60+ can secure this property for up to 59% less, by purchasing a Lifetime Lease.



14007802/20240328/NS/AQ