



OVER 60?

Secure this property
for up to **59% less!**

Price
£295,000

Freehold

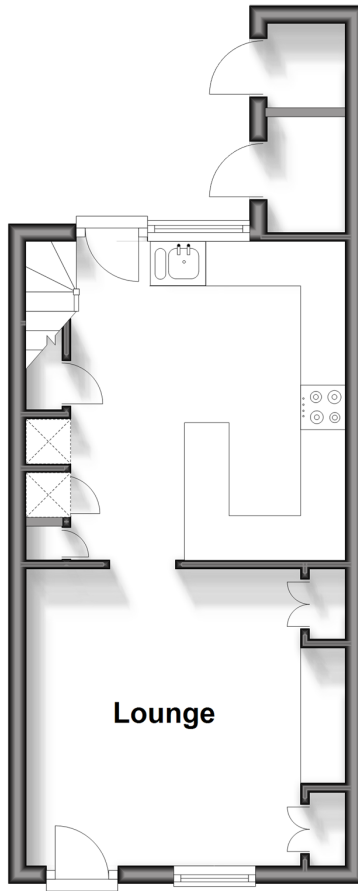
3x  1x  1x 

**Silver Hill, Tenterden,
Kent, TN30**

Wards
Helping you move forwards

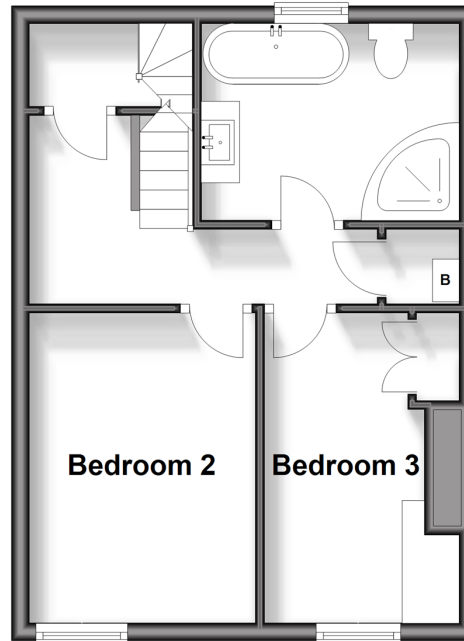
Ground Floor

Approx. 27.2 sq. metres (293.1 sq. feet)



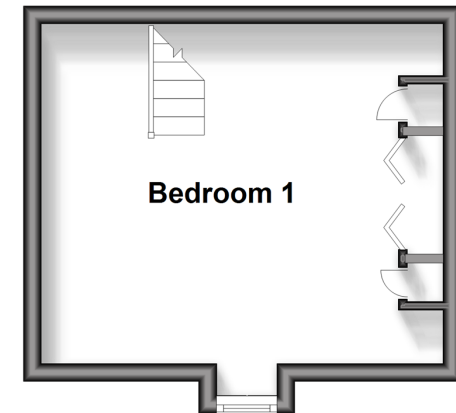
First Floor

Approx. 32.5 sq. metres (349.7 sq. feet)



Second Floor

Approx. 17.5 sq. metres (187.9 sq. feet)



Accommodation

GROUND FLOOR

Lounge: 12'2 x 10'10 (3.71m x 3.30m)

Kitchen: 12'6 x 10'3 (3.81m x 3.13m)

FIRST FLOOR

Landing

Bedroom 2: 11'4 x 8'5 (3.46m x 2.57m)

Bedroom 3: 11'5 x 7'2 (3.48m x 2.19m)

Bathroom: 9'6 x 7'4 (2.90m x 2.24m)

SECOND FLOOR

Bedroom 1: 14'7 x 14'1 (4.45m x 4.30m)

OUTSIDE

Front and Rear Gardens
Driveway



Main features

- Beautifully renovated 3 bedroom mid-terraced house
- Character features throughout
- Brand new kitchen complimenting the property's period
- Rear garden with off road parking
- Under floor heating throughout
- Chain free



Nearest Schools

Primary Schools: St Michael's C of E Primary (Tenterden) 0.6 miles, Tenterden C of E Junior School 0.8 miles, High Halden C of E Primary 2.7 miles. Secondary Schools: Homewood School and Sixth Form Centre 0.2 miles, Benenden School 7.7 miles, Rye College 8.6 miles



Transport Information

Train Stations: Headcorn 6.8 miles, Ham Street 6.9 miles, Appledore 7.4 miles



Address

Silver Hill, Tenterden, Kent, TN30



Directions

For directions to this property please contact us.



Wards
Helping you move forwards

Call Tenterden Branch 01580 766002 ■ wardsofkent.co.uk



- Legal advice should be taken to verify fixtures/fittings, planning, alterations and/or lease details
- Appliances & services are untested, dimensions are approximate and floor plans are not to scale
- Through a Homewise Home For Life Plan people aged 60+ can secure this property for up to 59% less, by purchasing a Lifetime Lease.



14007809/20240416/NS/AQ