



OVER 60?

Secure this property
for up to **59% less!**

Price
£375,000

Freehold

3x  1x  1x 

**High Street, Rolvenden,
Tonbridge, Kent, TN17**

Wards
Helping you move forwards



Main features

- Well presented 3 bedroom end terrace house
- Free flowing layout between the lounge and dining area
- Loft room creating great work from home office
- Generous low maintenance rear garden
- Desirable village location

Accommodation

GROUND FLOOR

Hall

Kitchen: 11'8 x 9'7 (3.56m x 2.92m)

Dining Area: 11'5 x 8'5 (3.48m x 2.57m)

Lounge: 21'7 x 11'7 (6.58m x 3.53m)

FIRST FLOOR

Landing

Bedroom 1: 11'5 x 10'7 (3.48m x 3.23m)

Bedroom 2: 11'4 x 9'4 (3.46m x 2.85m)

Bedroom 3: 10'8 x 8'8 (3.25m x 2.64m)

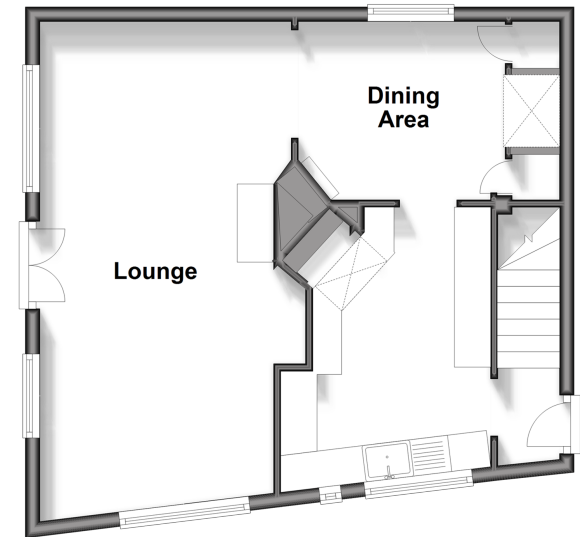
Bathroom: 10'6 x 8'3 (3.20m x 2.52m)

OUTSIDE

Front and Rear Gardens

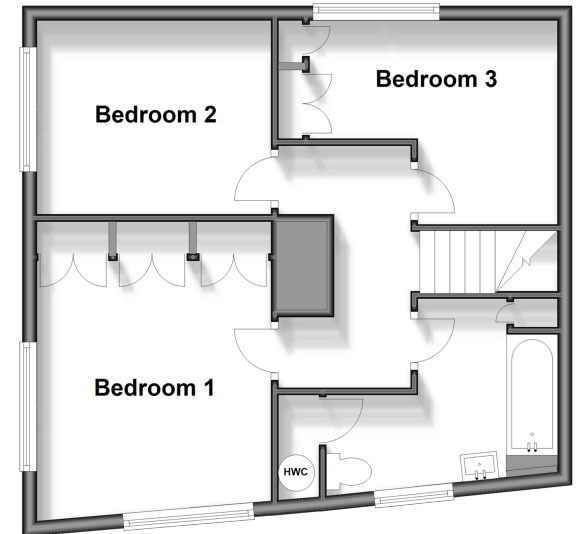
Ground Floor

Approx. 46.0 sq. metres (494.6 sq. feet)



First Floor

Approx. 46.9 sq. metres (504.6 sq. feet)



Call Tenterden - 01580 766002 ■ wardsofkent.co.uk

- Legal advice should be taken to verify fixtures/fittings, planning, alterations and/or lease details
- Appliances & services are untested, dimensions are approximate and floor plans are not to scale
- Through a Homewise Home For Life Plan people aged 60+ can secure this property for up to 59% less, by purchasing a Lifetime Lease.



14007814/20240507/AQ/AQ